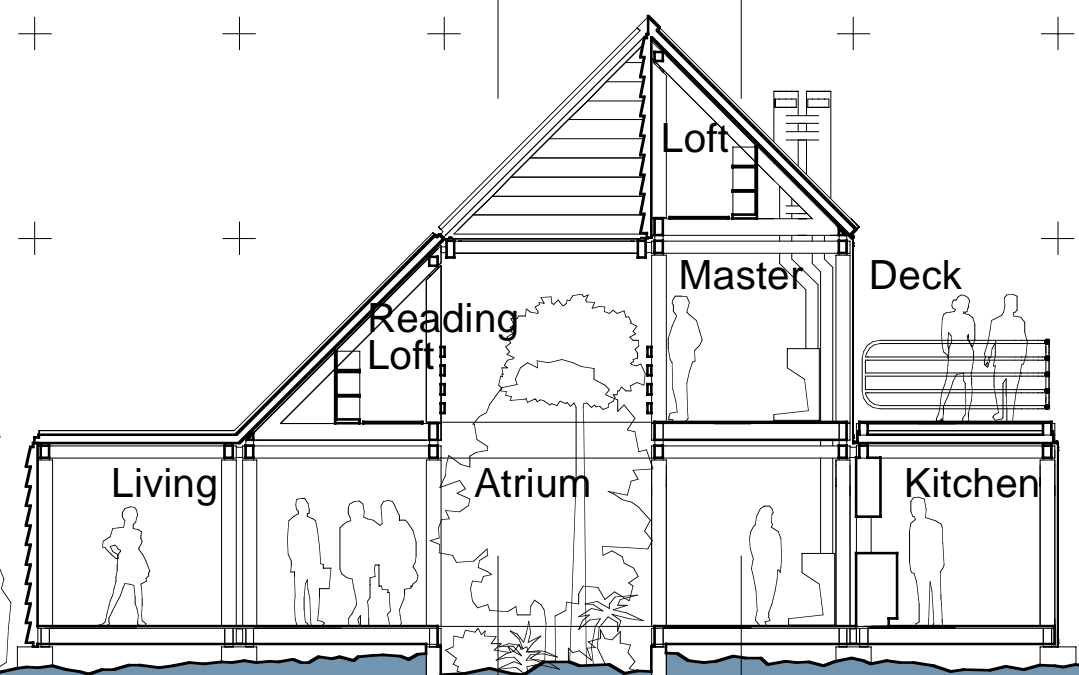


West-East Section



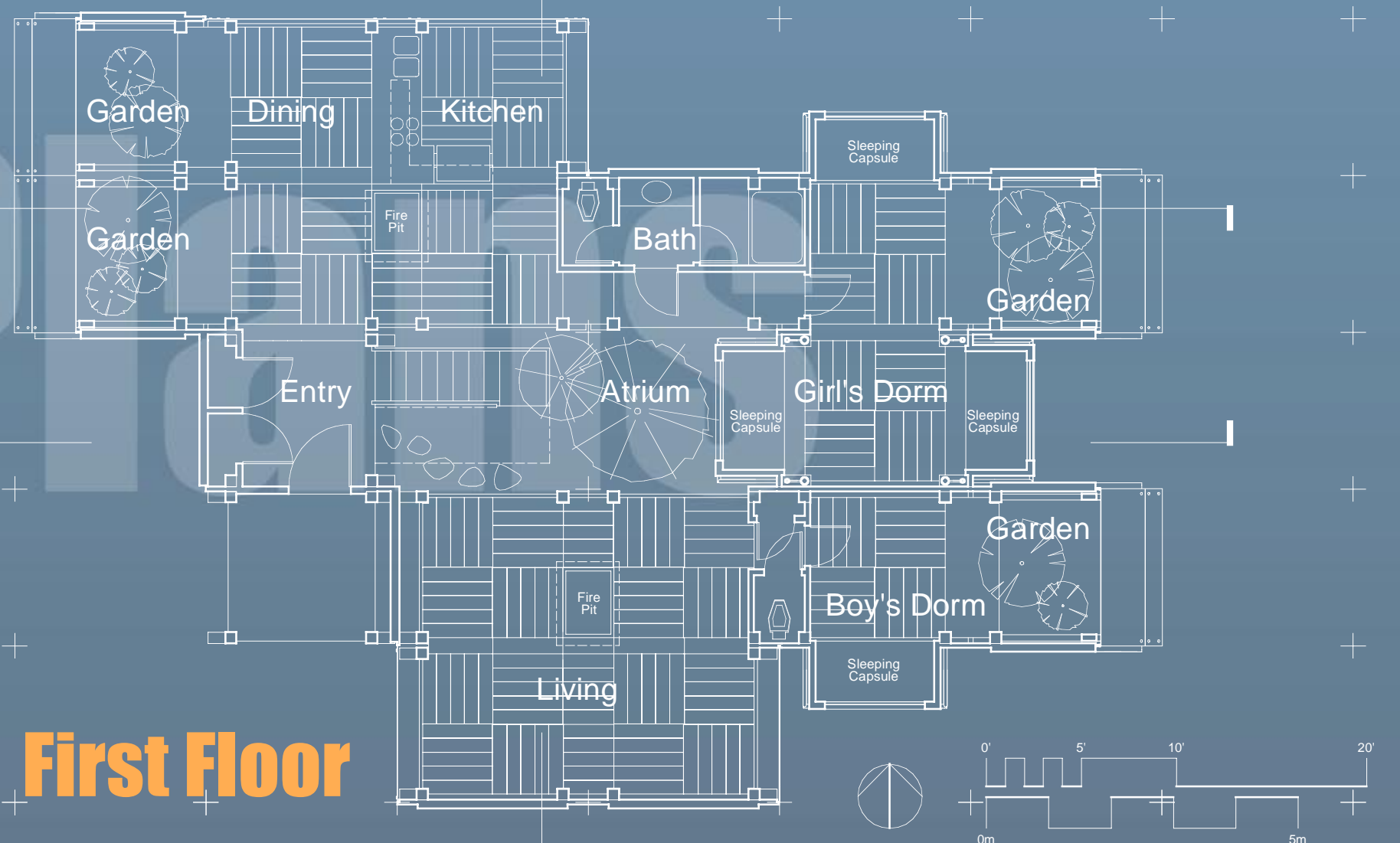
South-North Section



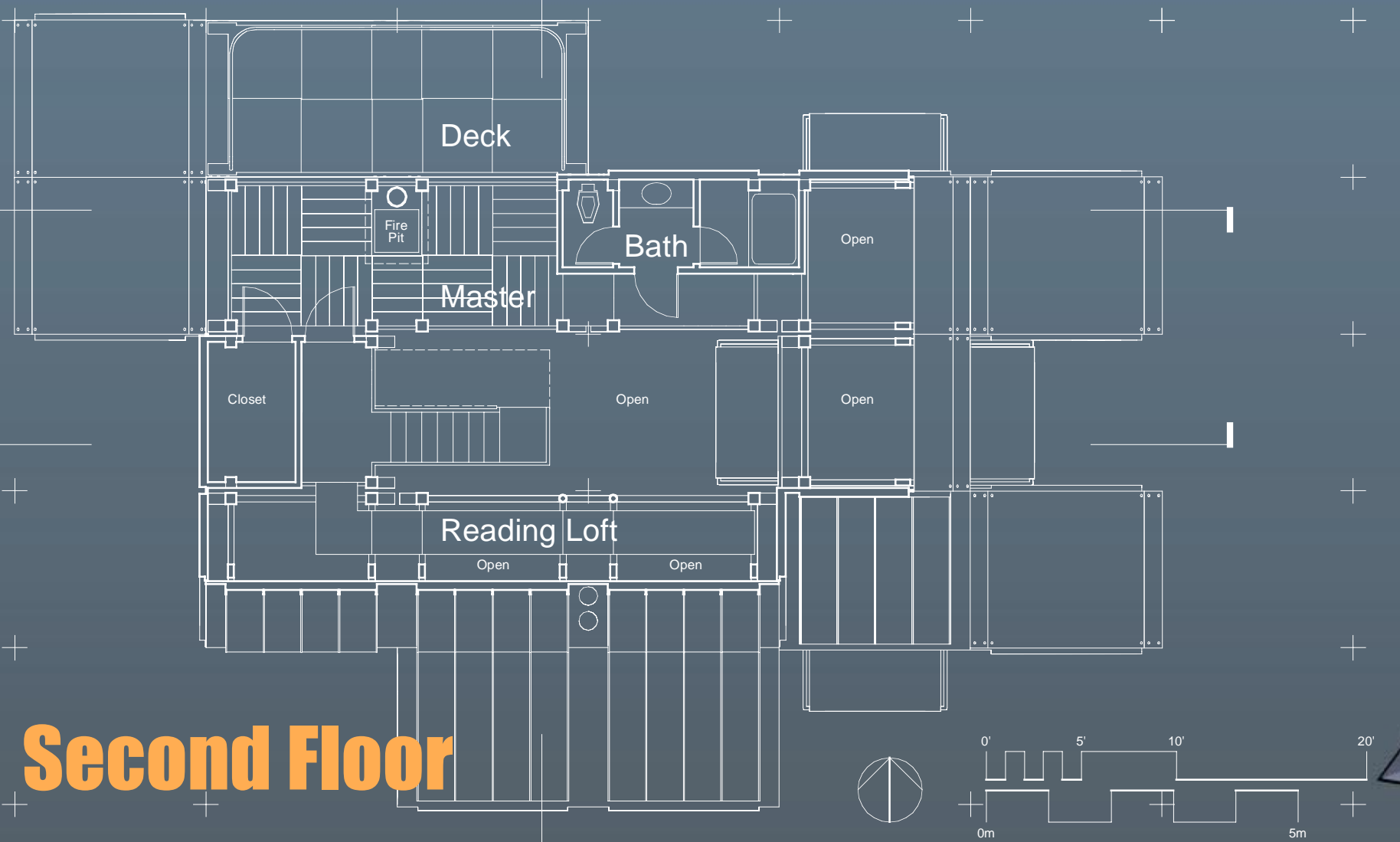
West



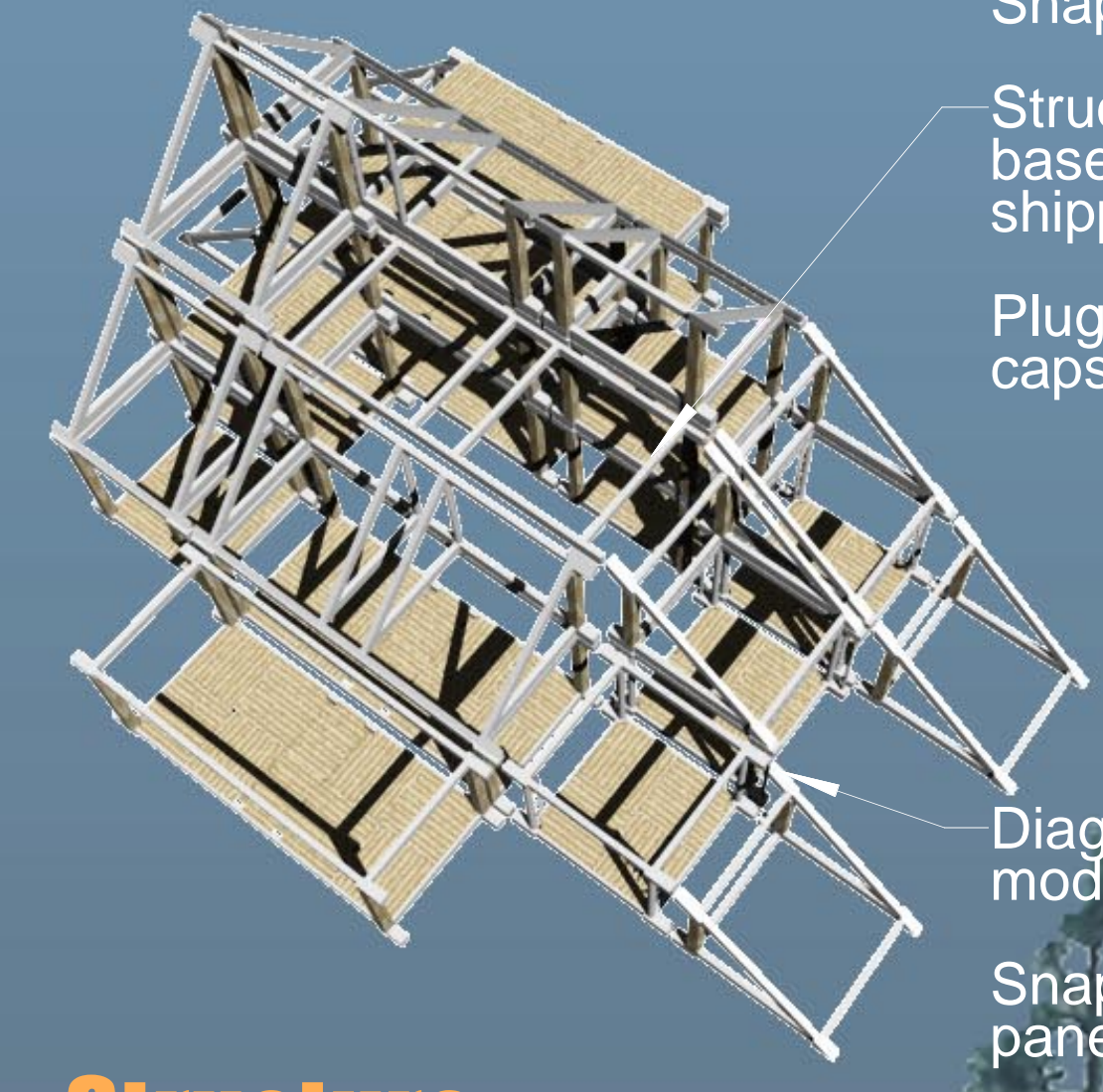
North



First Floor



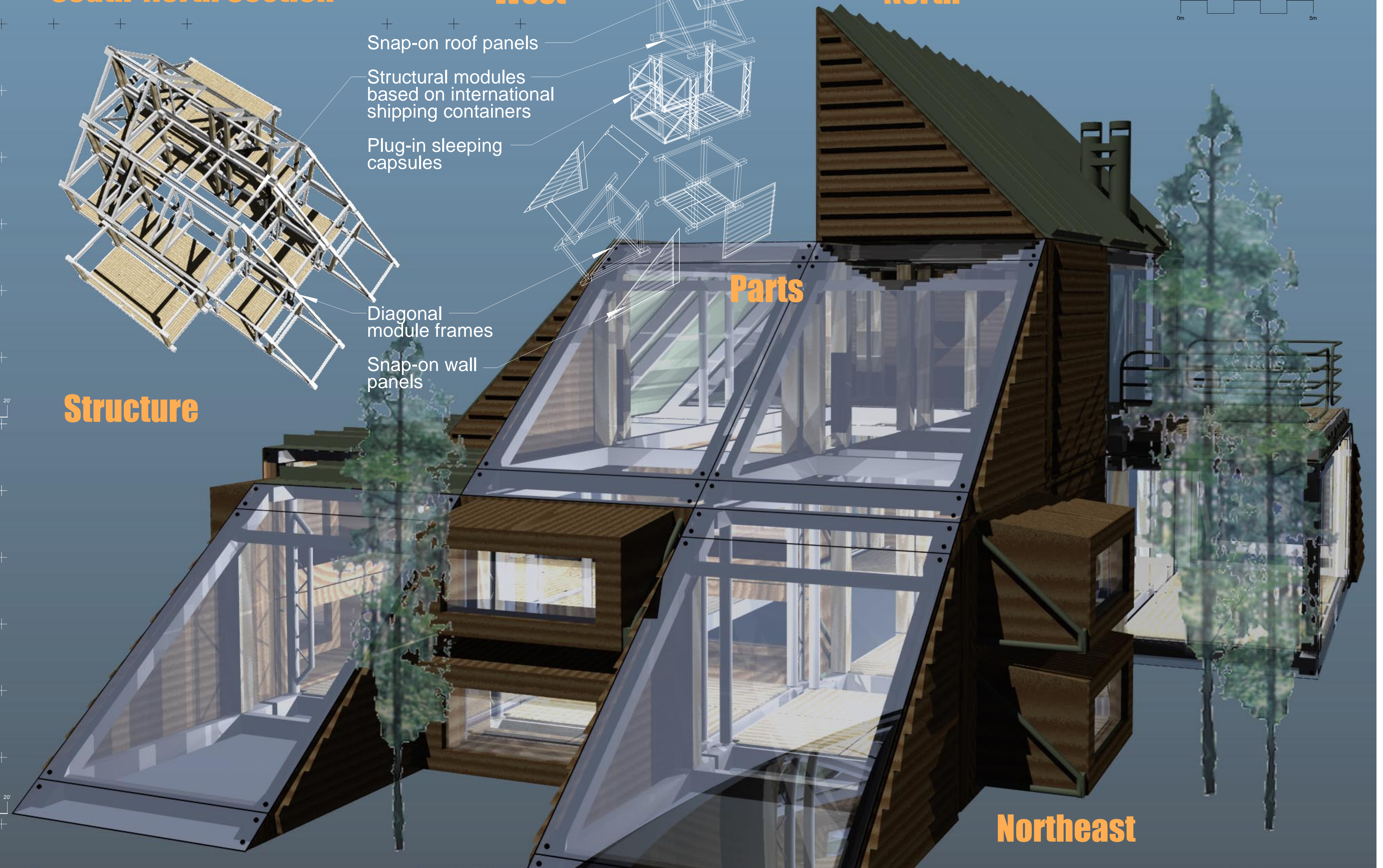
Second Floor



Structure

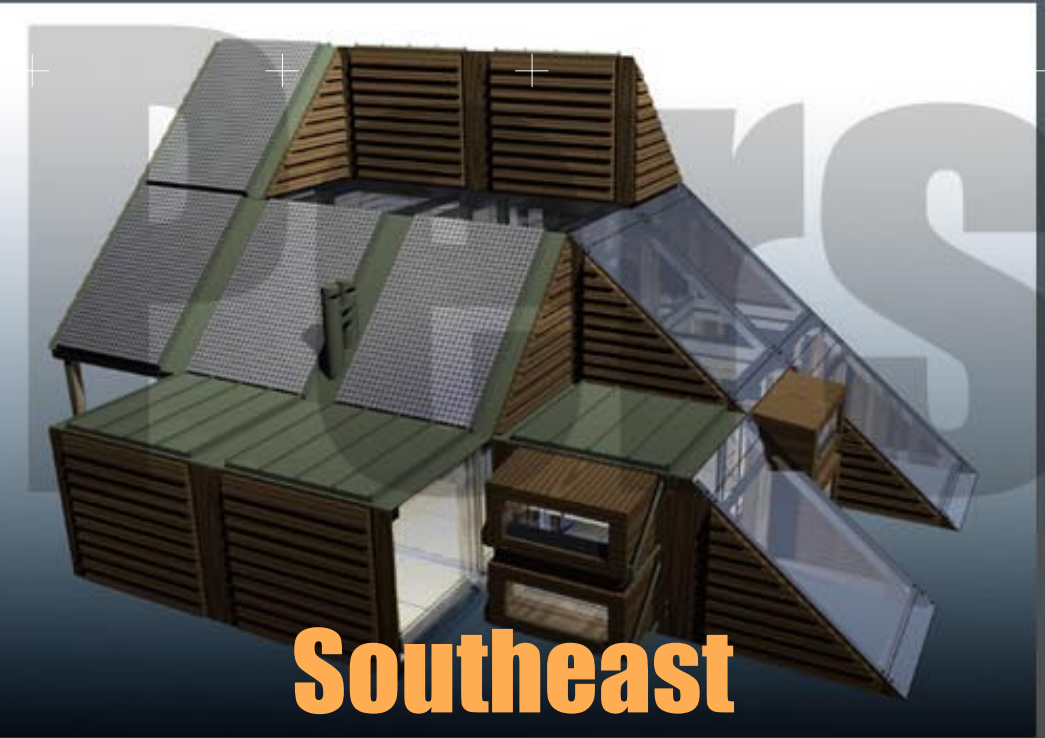
Snap-on roof panels
Structural modules based on international shipping containers
Plug-in sleeping capsules

Diagonal module frames
Snap-on wall panels

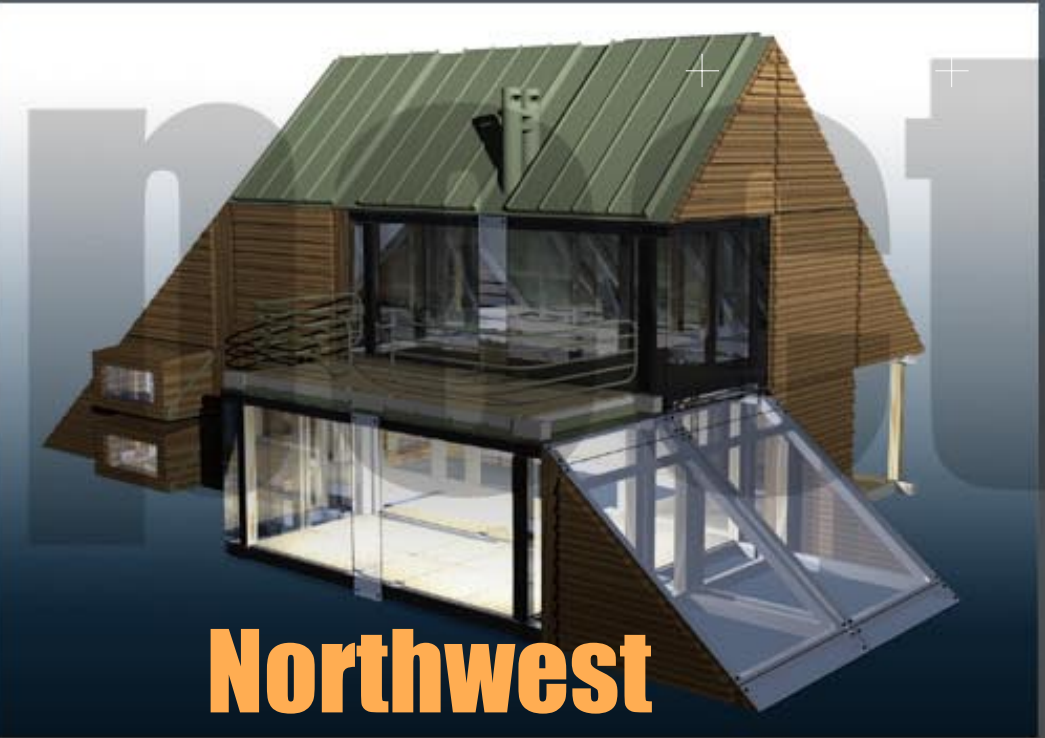


Parts

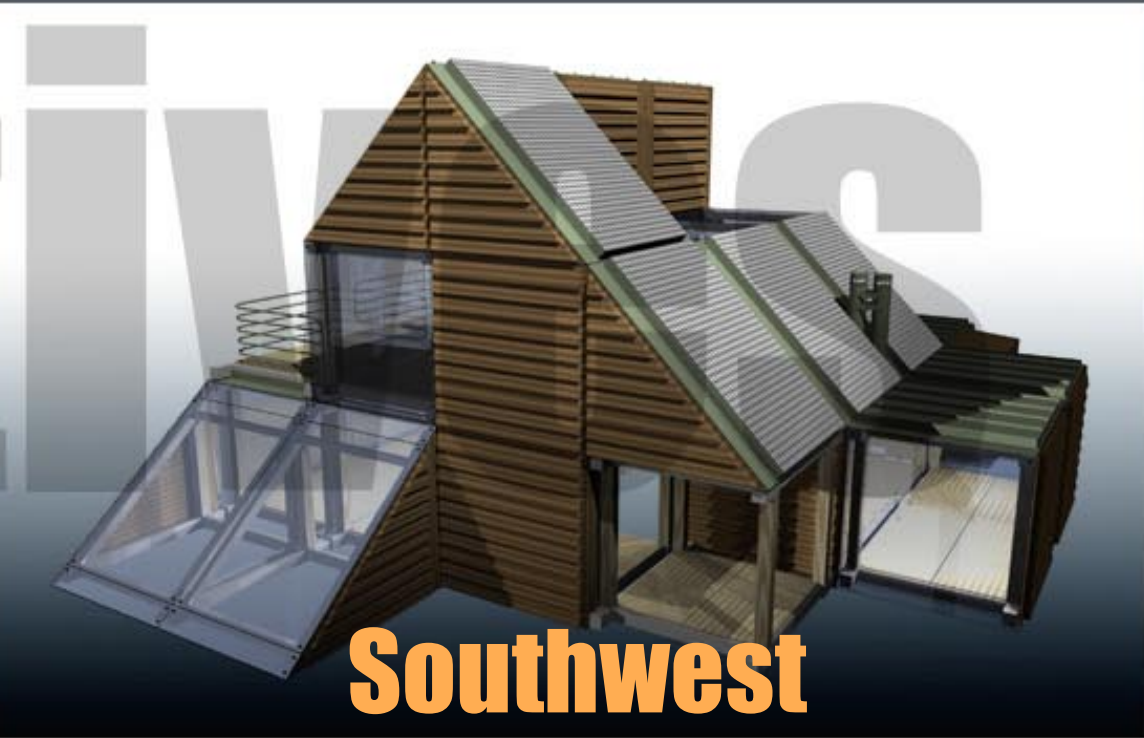
Northeast



Southeast



Northwest

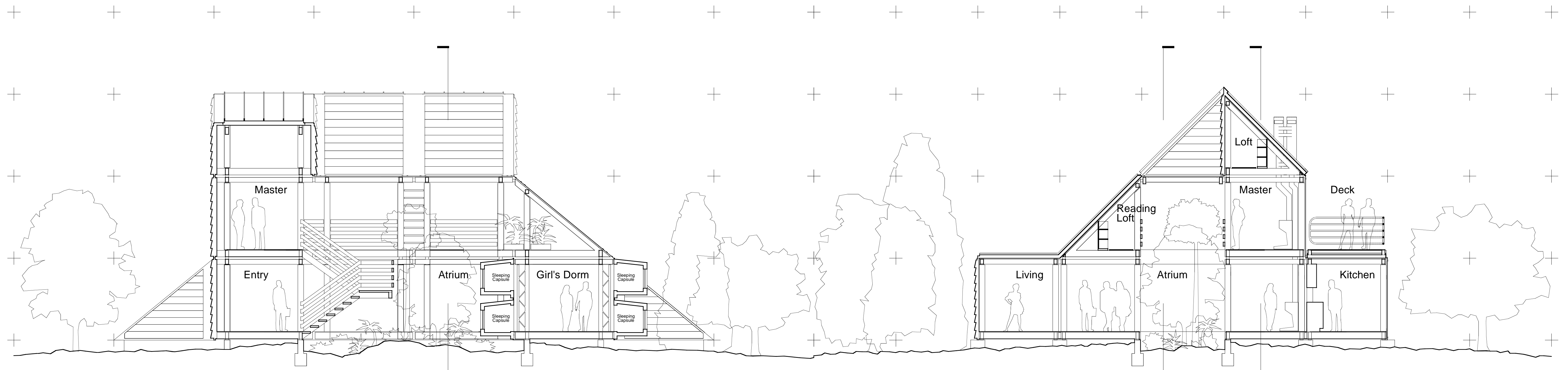


Southwest

Concept

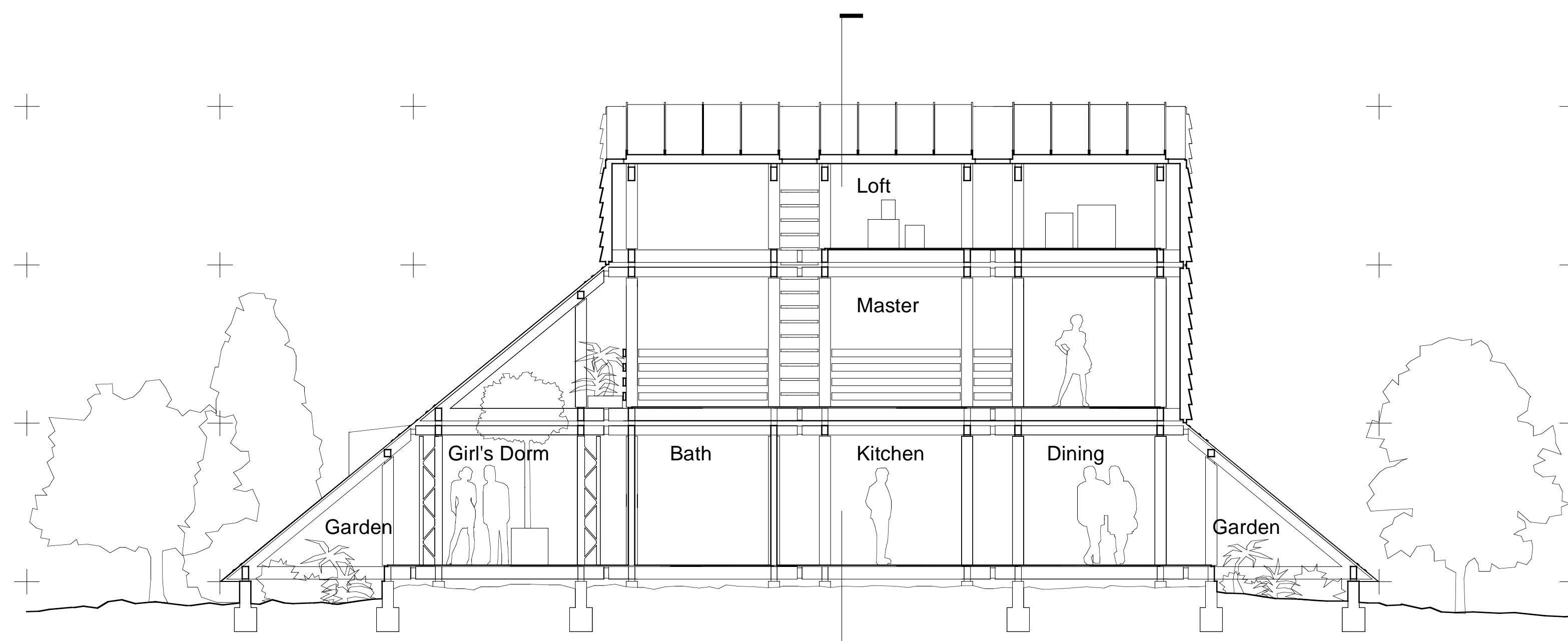
The CONTAINER01 house is made up of modules based on international shipping container size standards. Shipping containers are eight feet wide, and are manufactured in four lengths: 10 foot, 20 foot, 30 foot, and 40 foot. The most common sizes are 20 foot and 40 foot, and extensions and modifications are common. CONTAINER01 places an eight foot square in the center of the ten foot span for universality of components.

A. Scott Howe 1999
creations
architecture / industrial design / creative research
<http://www.plugin-creations.com>



West-East Section

South-North Section



East-West Section



Container 01
 A. Scott Howe 1999
 creations
 architecture / industrial design / creative research
<http://www.plugin-creations.com>