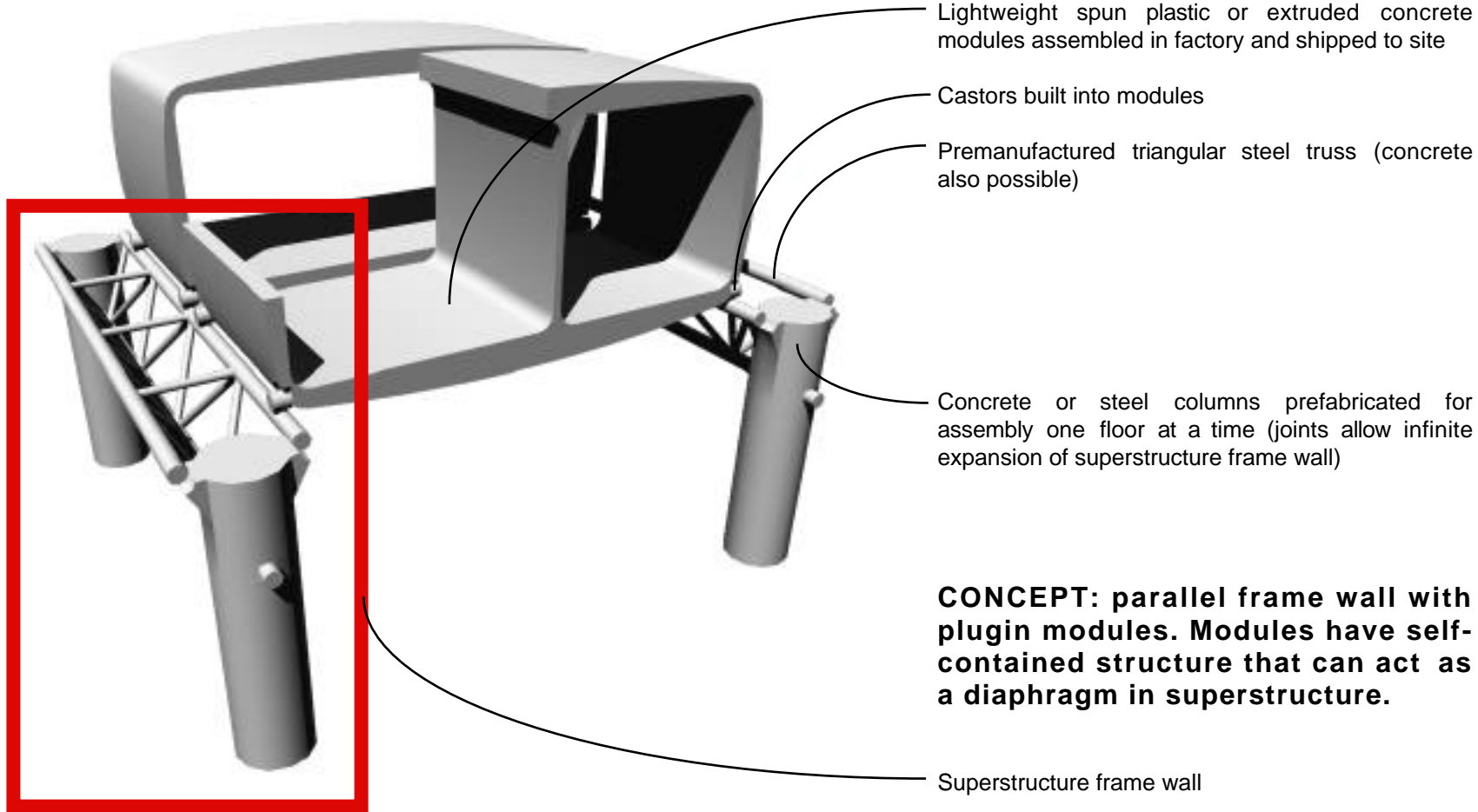


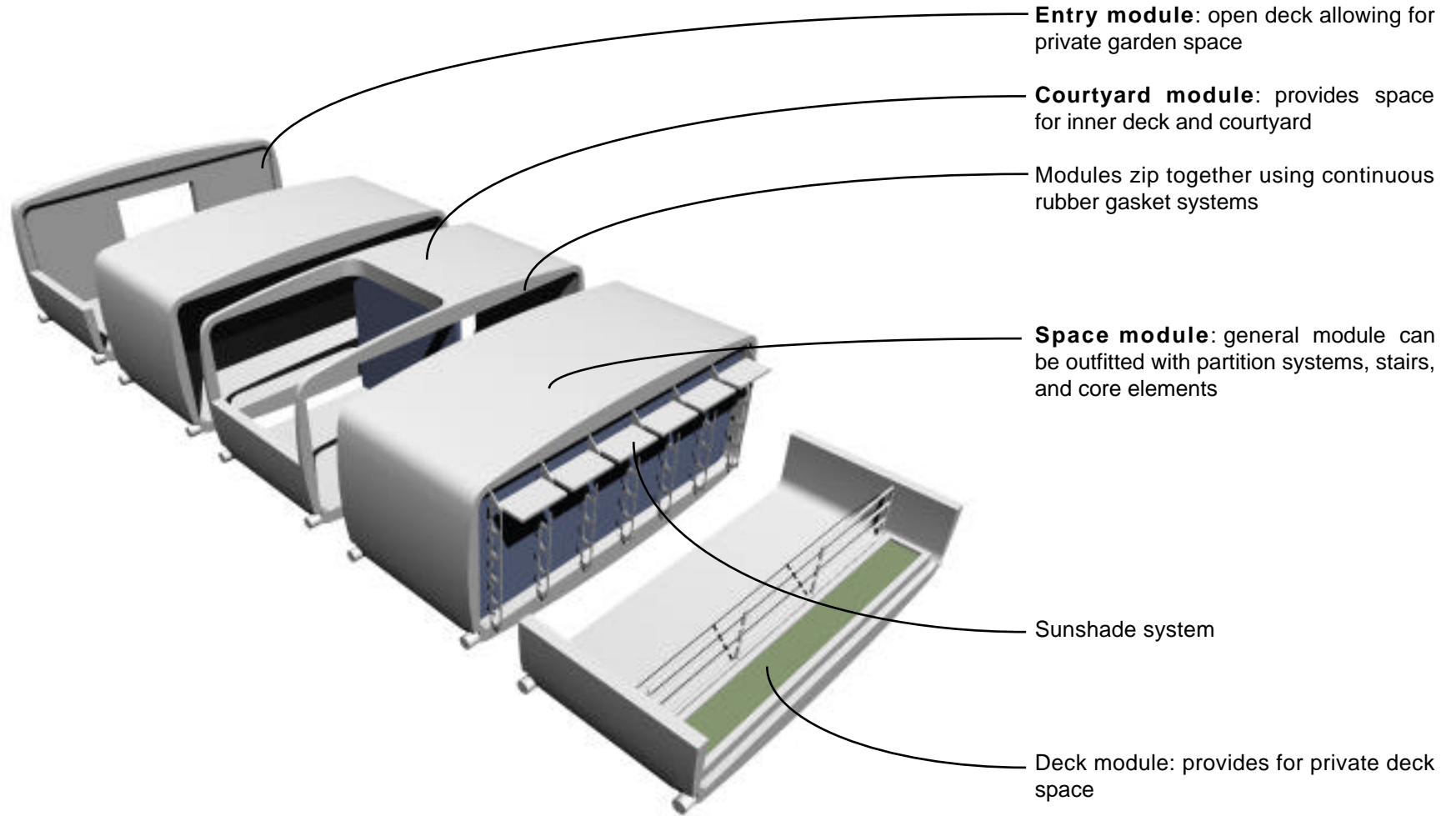
## IF7 Block Design : Plugin Modules

A. Scott Howe, architect 1997.10.21 Kajima

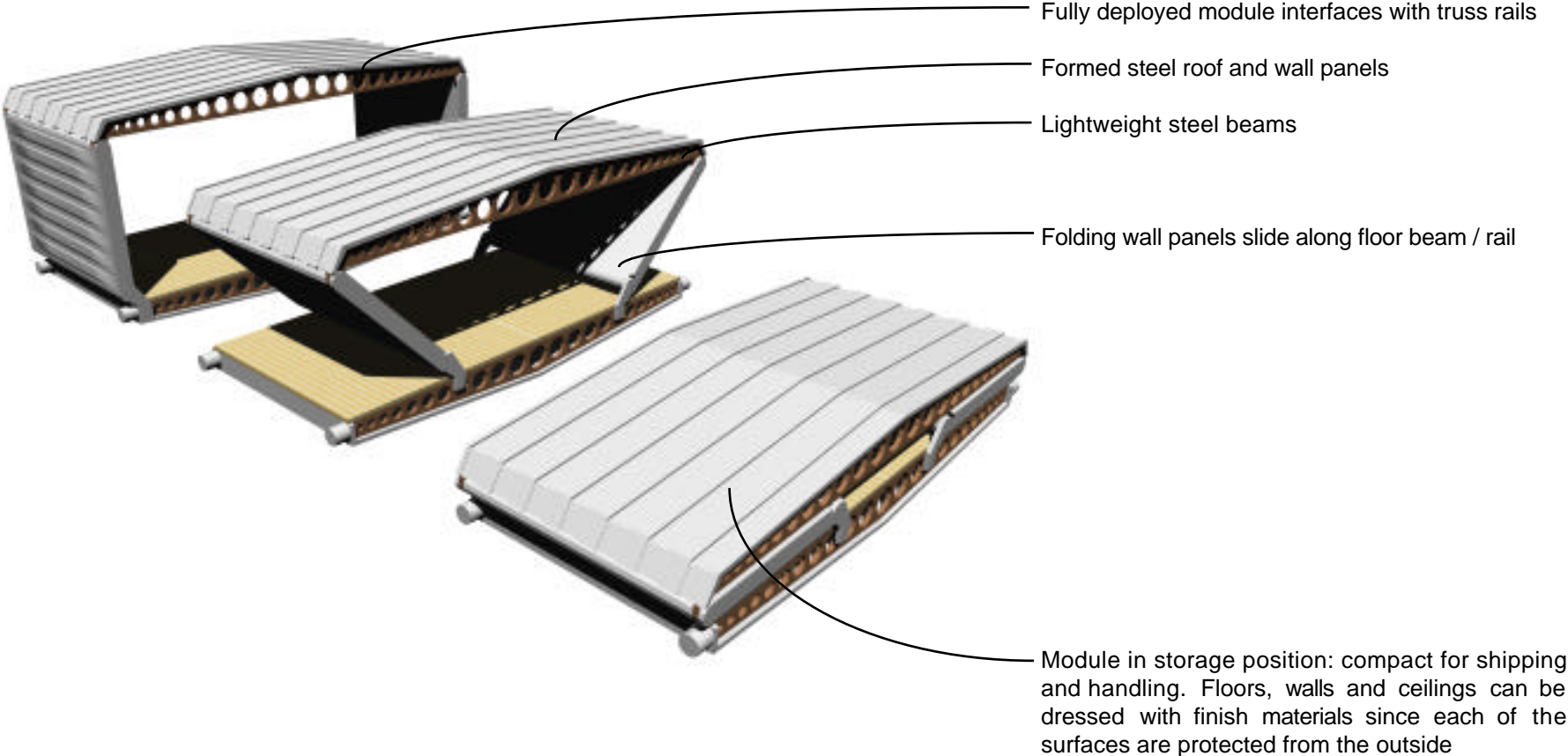


**CONCEPT: parallel frame wall with plugin modules. Modules have self-contained structure that can act as a diaphragm in superstructure.**

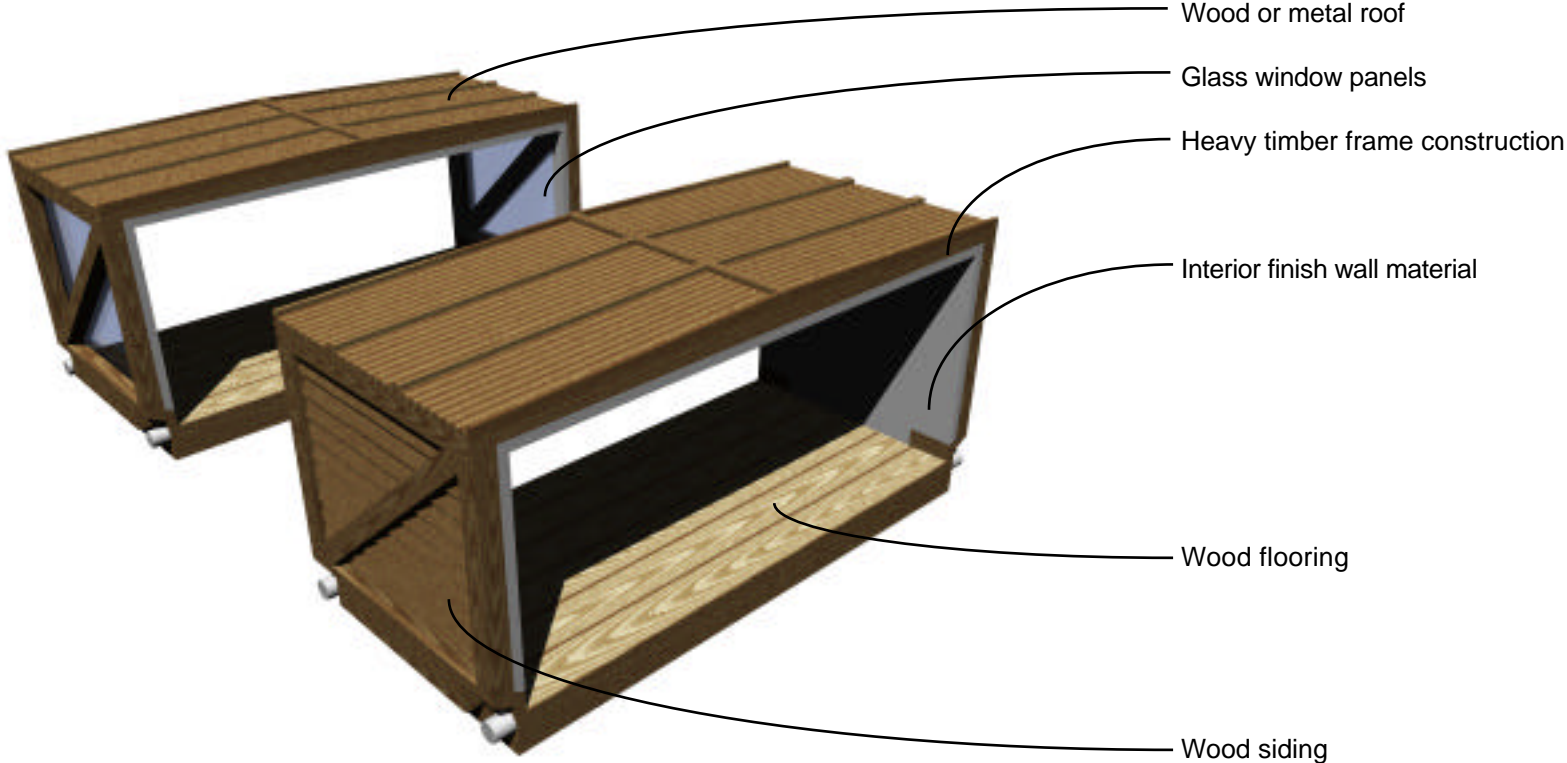
## Extruded Concrete

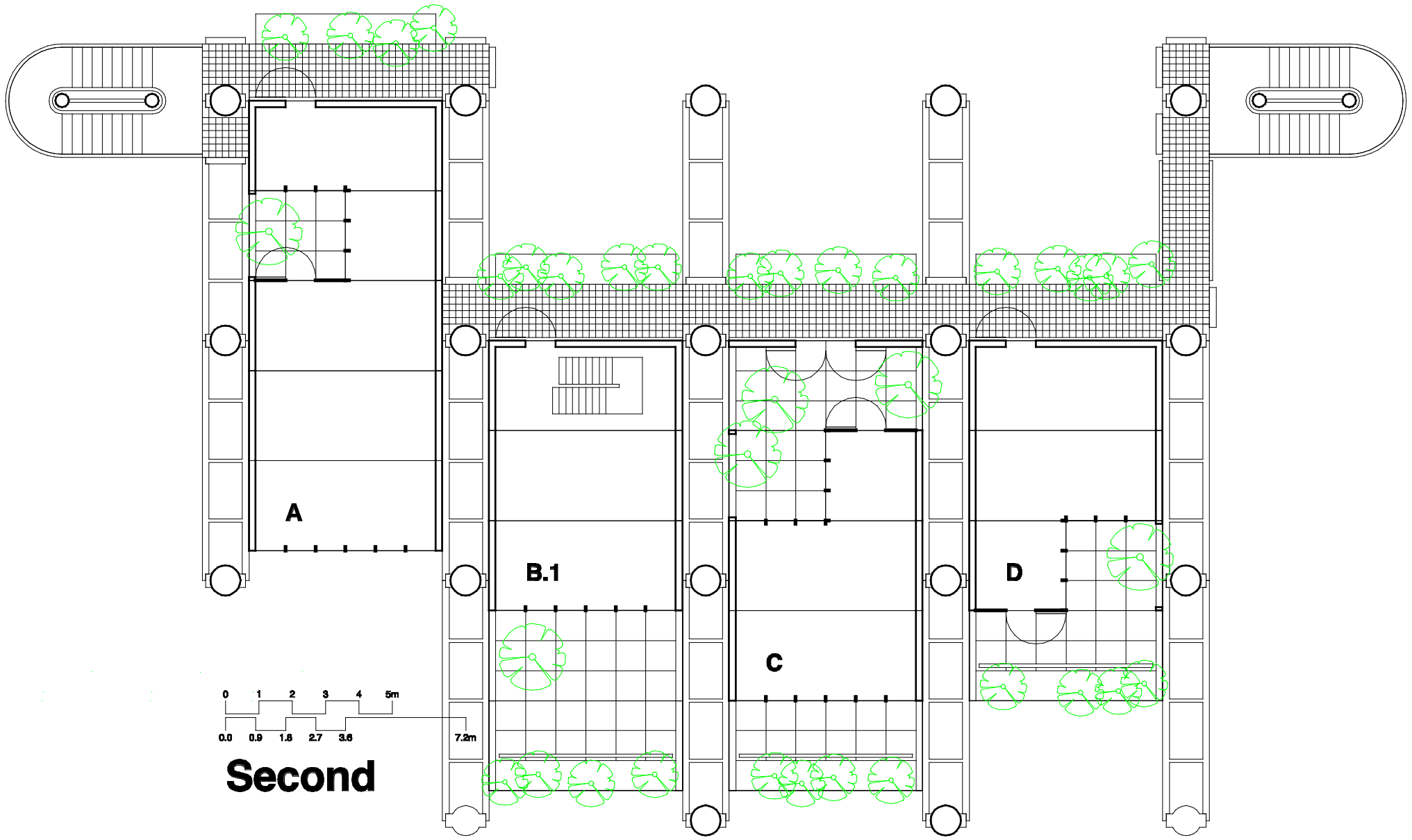


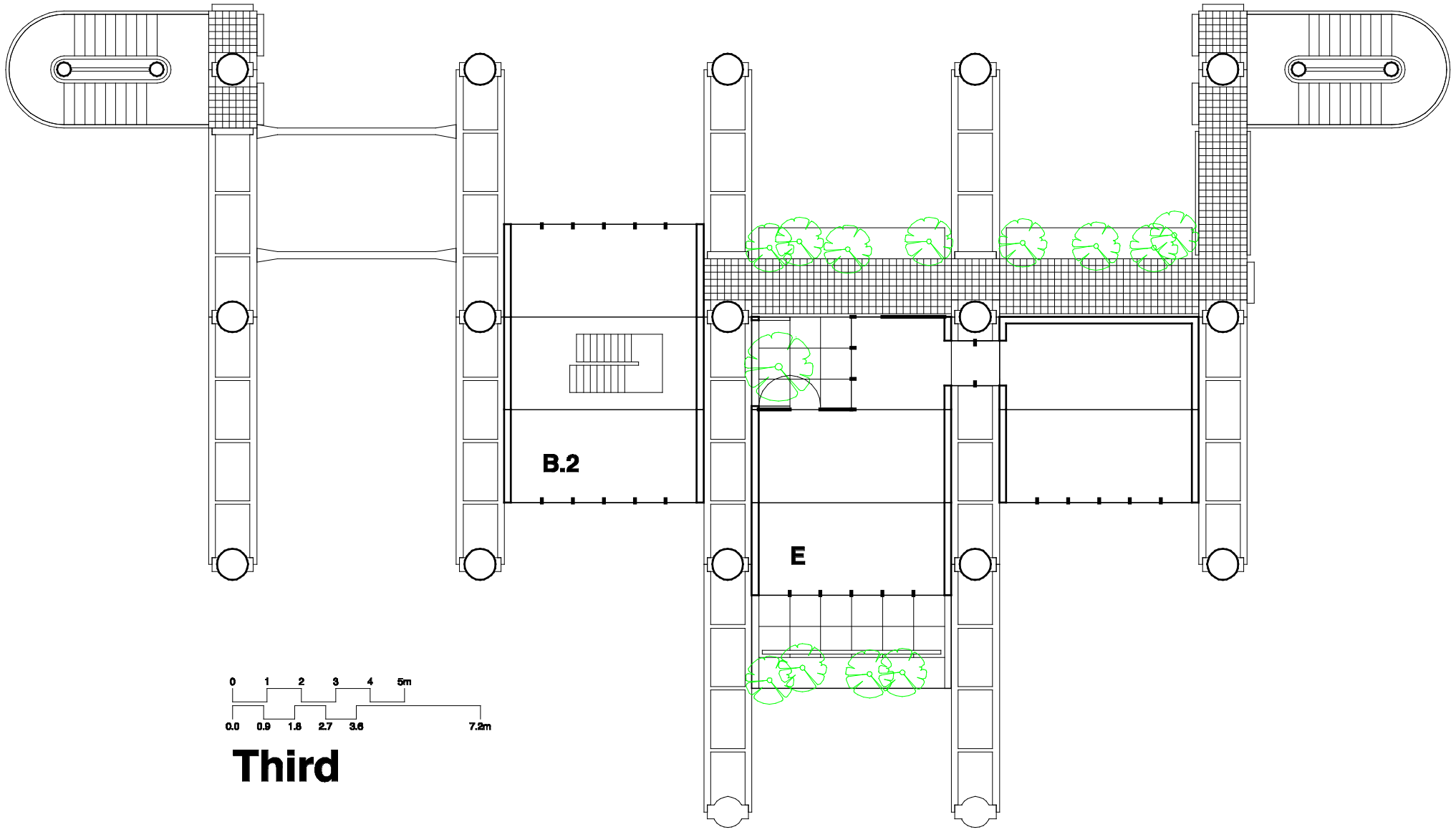
### Steel Construction

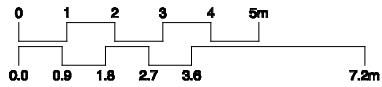
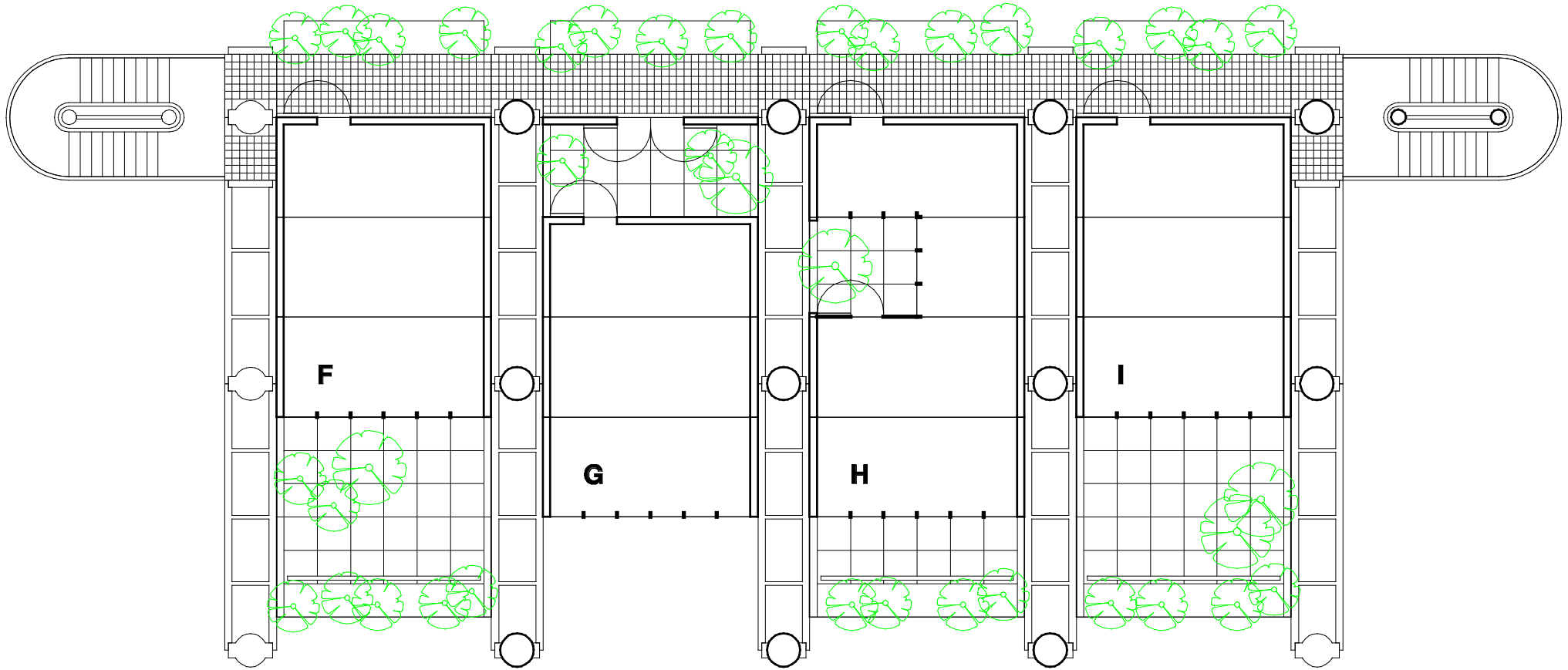


**Wood Construction**

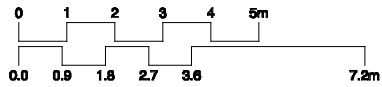
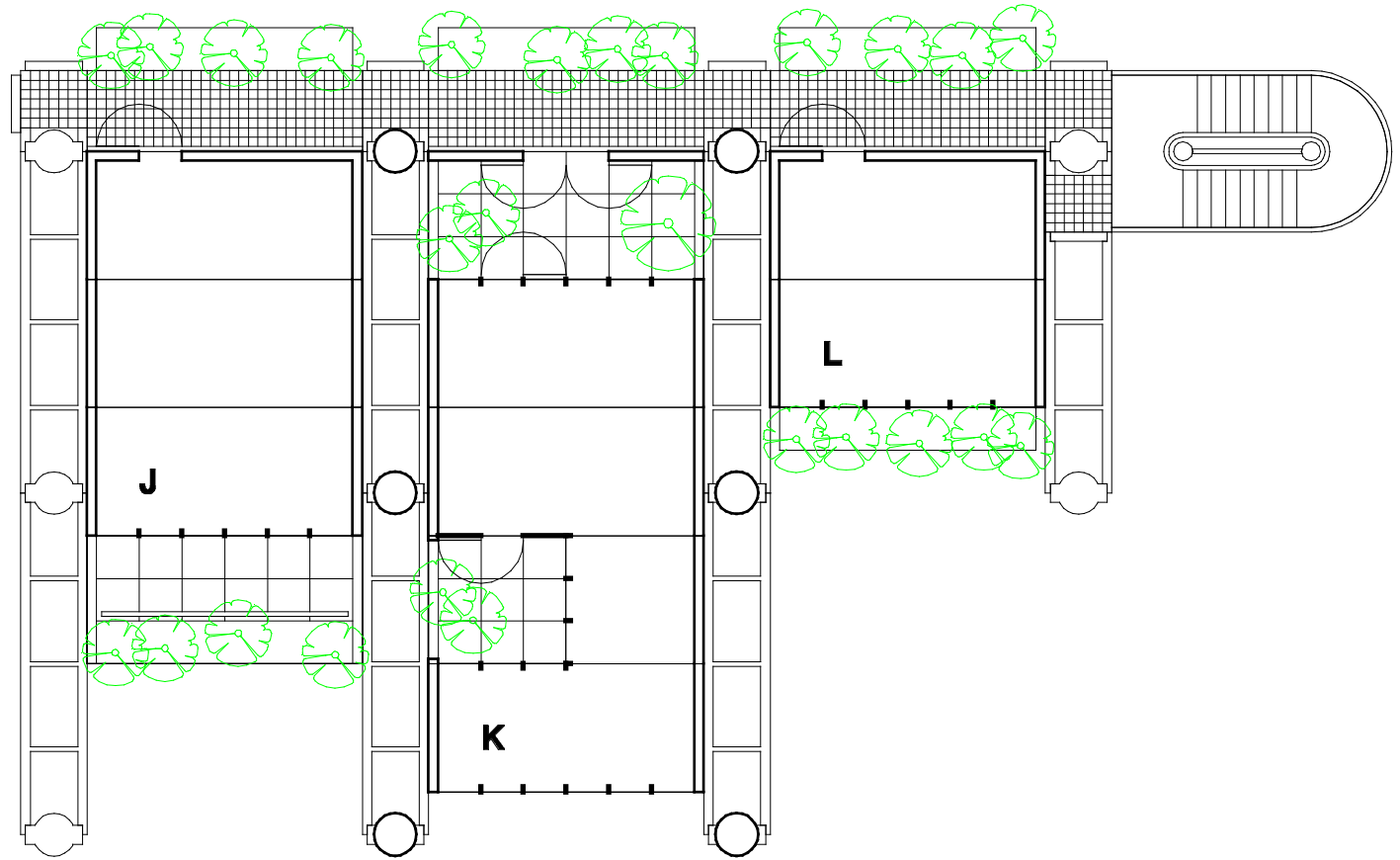




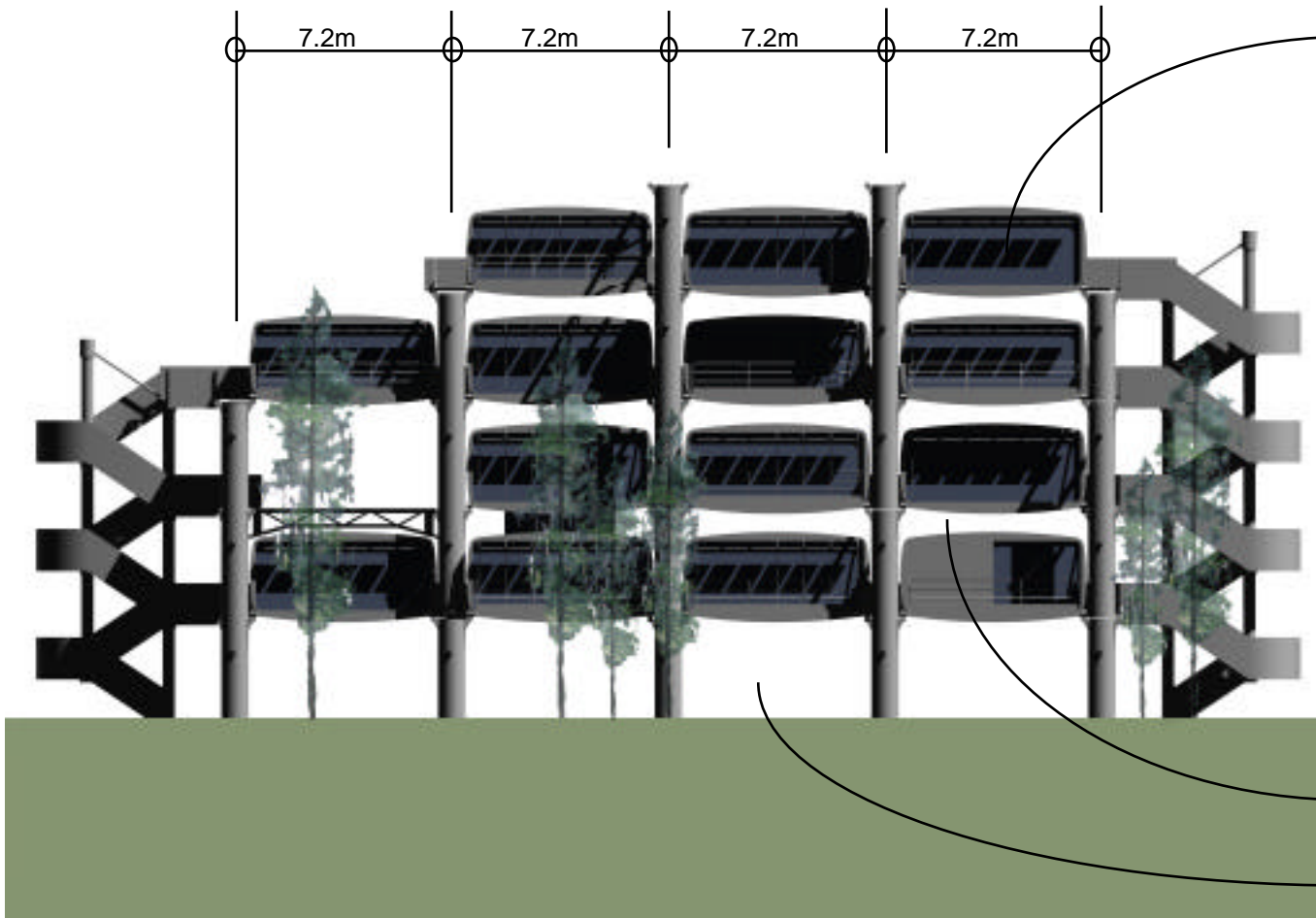




**Fourth**

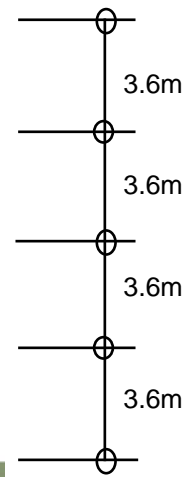


**Fifth**



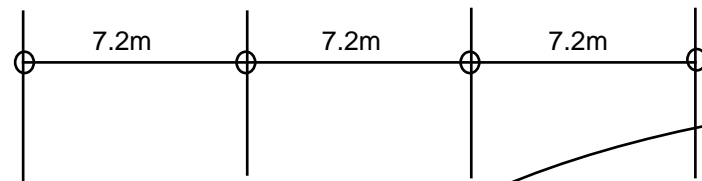
Apartment block unit

Apartment spaces are leased by the socket. The lease rates are determined by the length of the socket. Sockets can be left empty



Airy spaces between units allow sunlight in

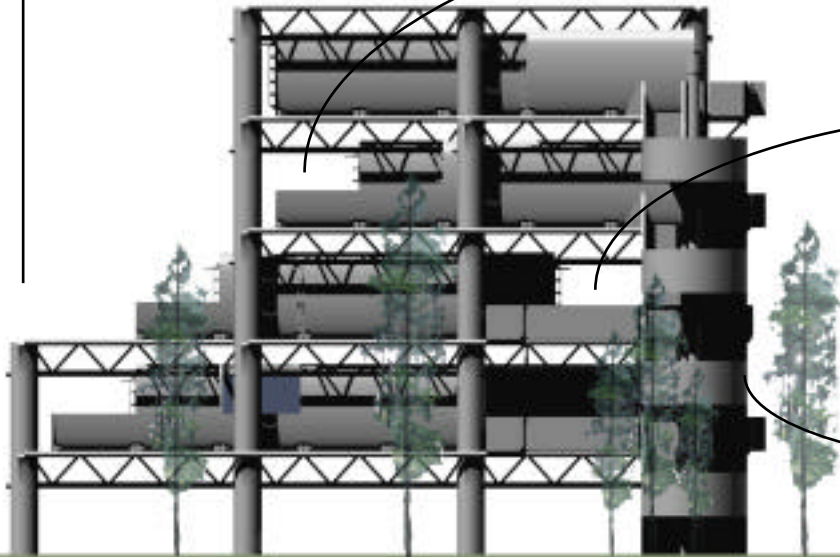
Parking spaces on ground level



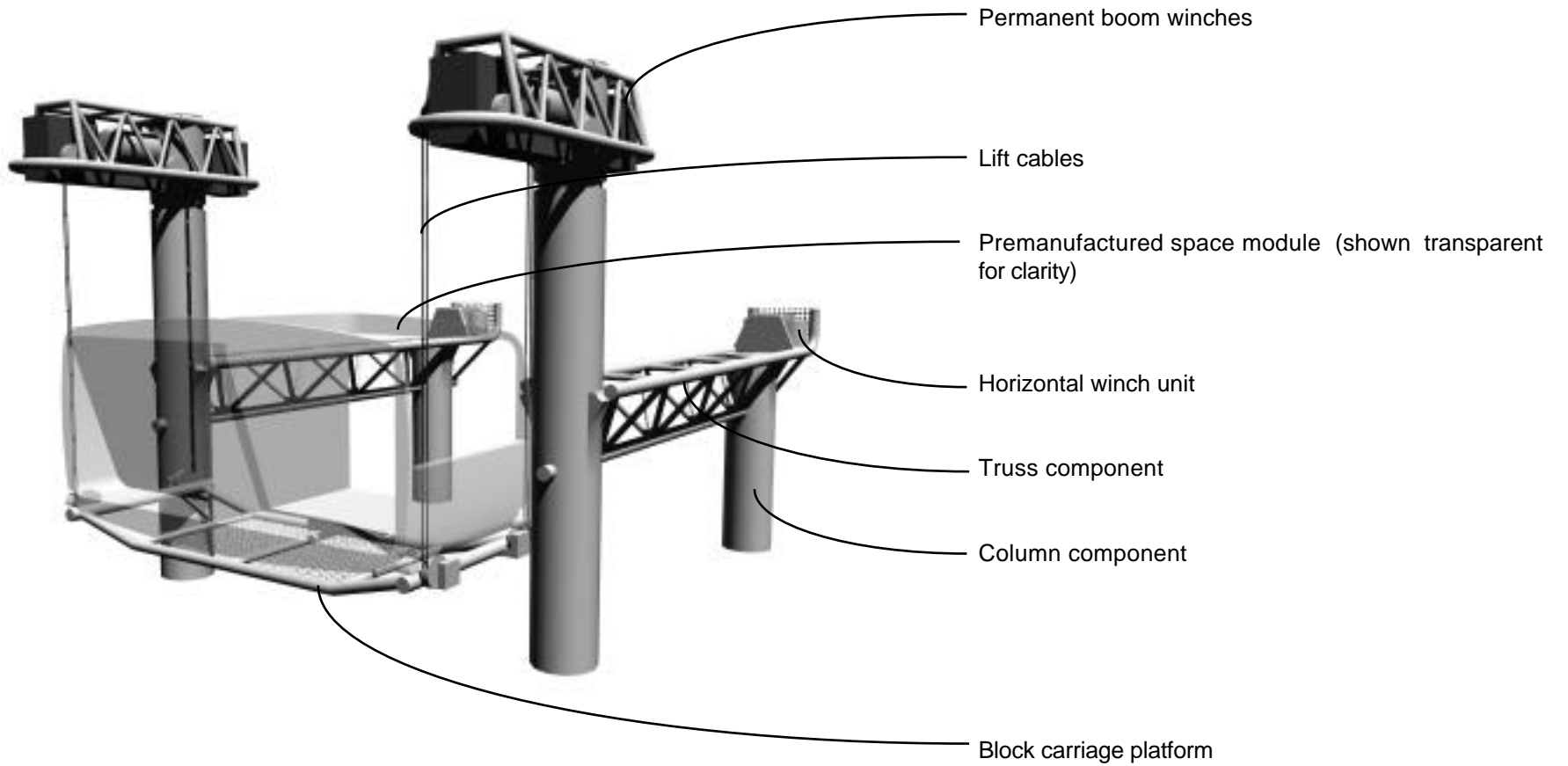
Superstructure can be stepped on the south-facing side in order to take advantage of solar exposure

Apartment block units can be placed anywhere in socket. This provides opportunity for playful volumes and spaces

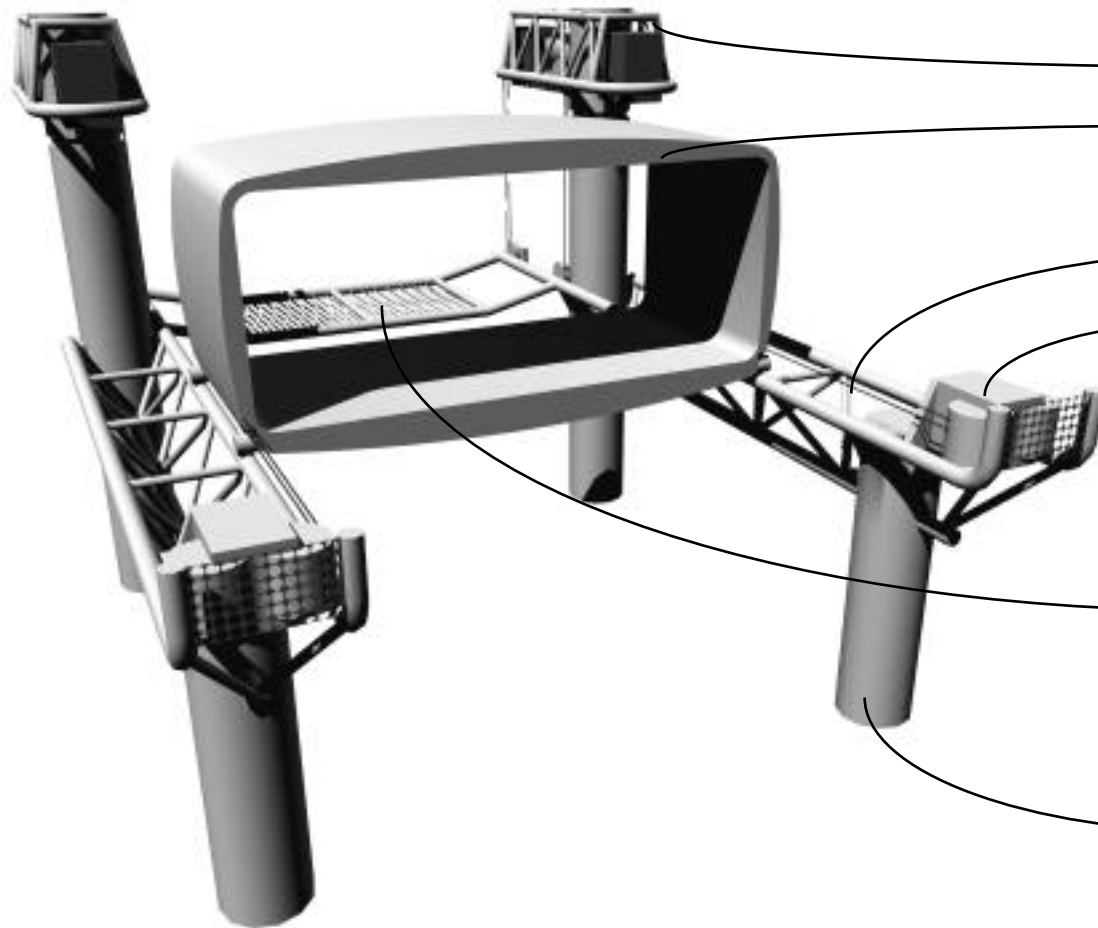
North wall is aligned vertically to allow for ease of block module add and removal



## Vertical Positioning



# Crane



## Horizontal Positioning

Permanent boom winch

Premanufactured space module

Winch cables

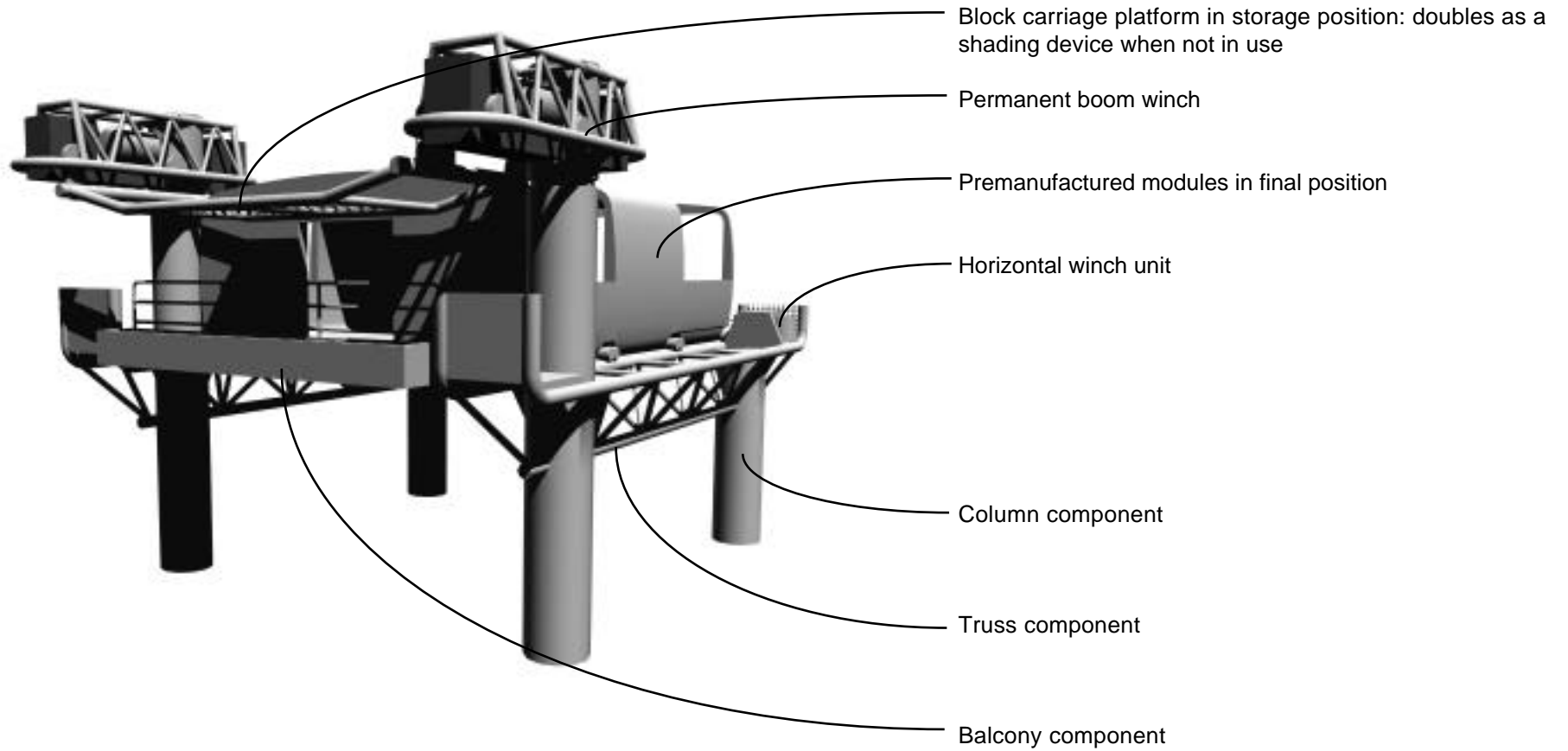
Horizontal winch unit

Block carriage platform in deployment position:  
end rails lock into truss rails to provide a  
smooth takeoff point

Column component

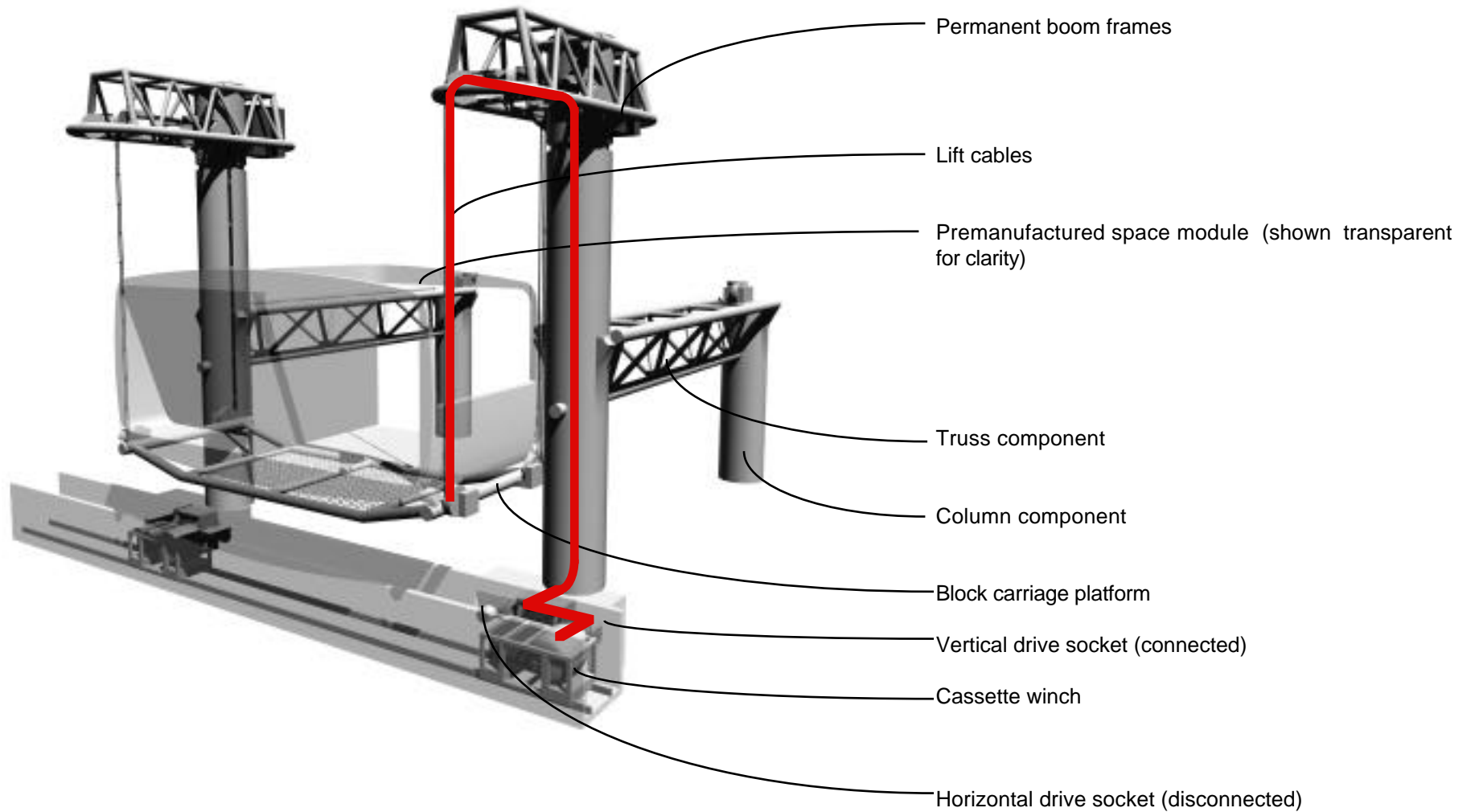
# Crane

## Installation Complete



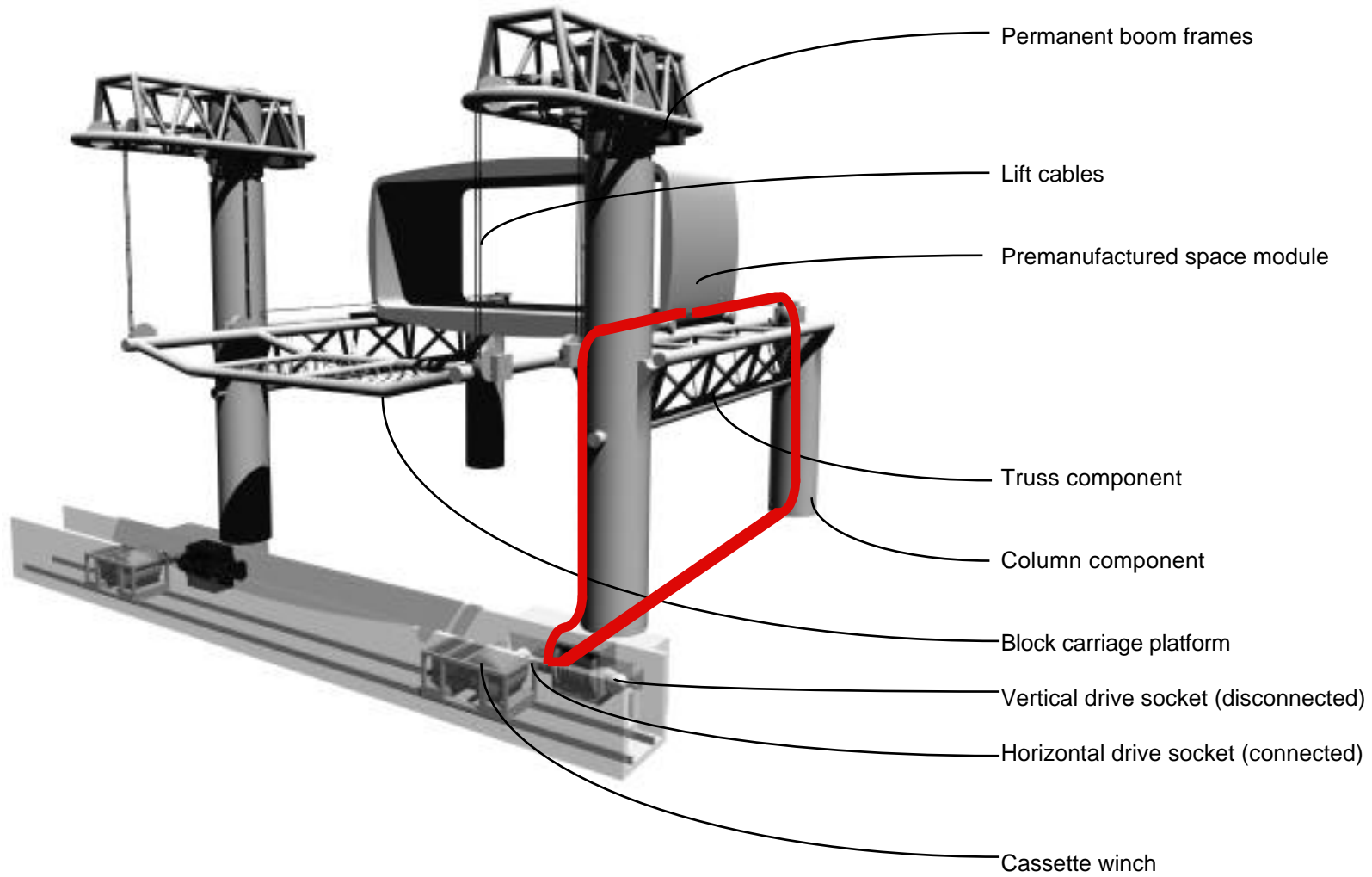
# Crane

## Vertical Positioning



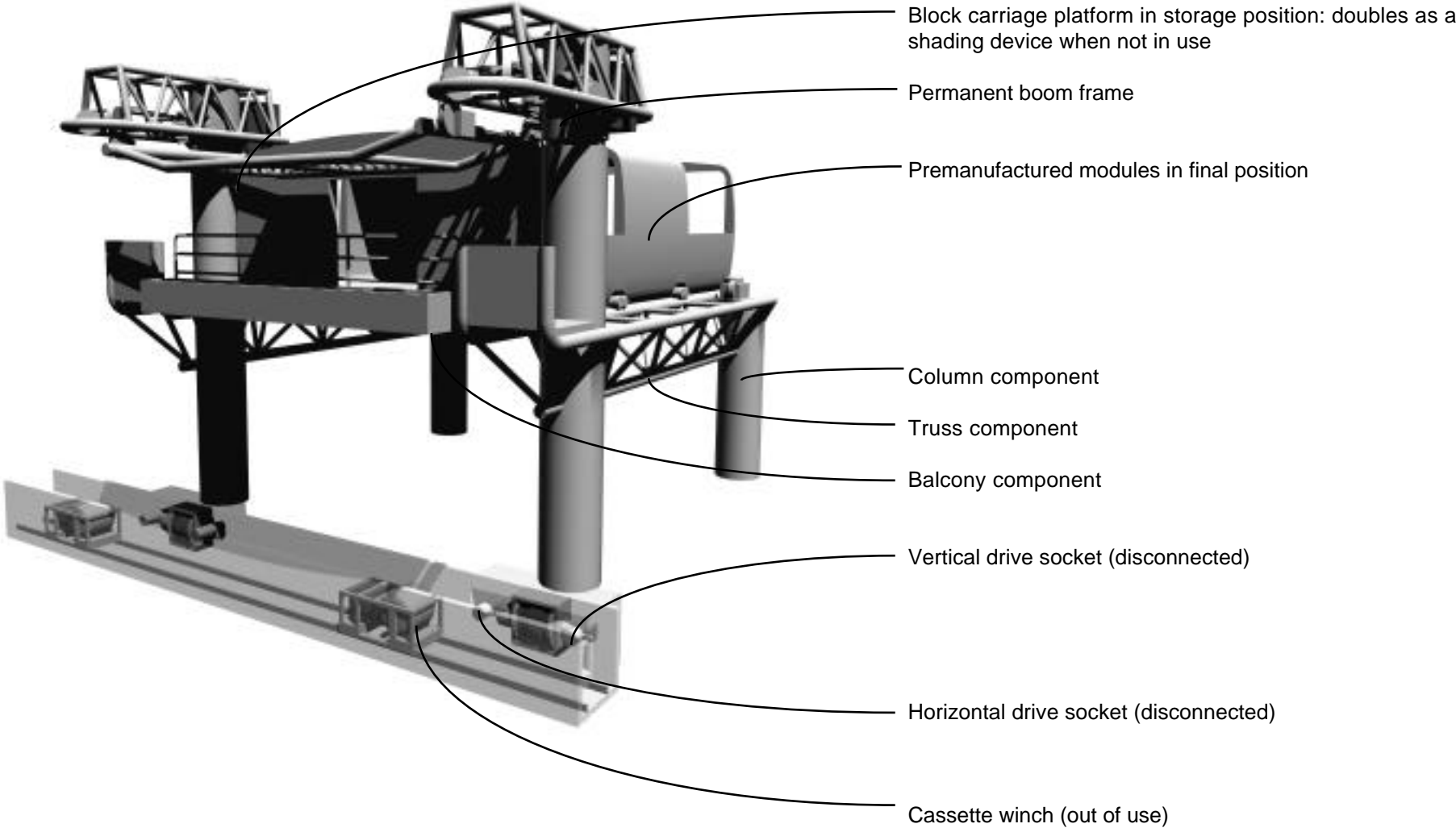
# Winch

## Horizontal Positioning



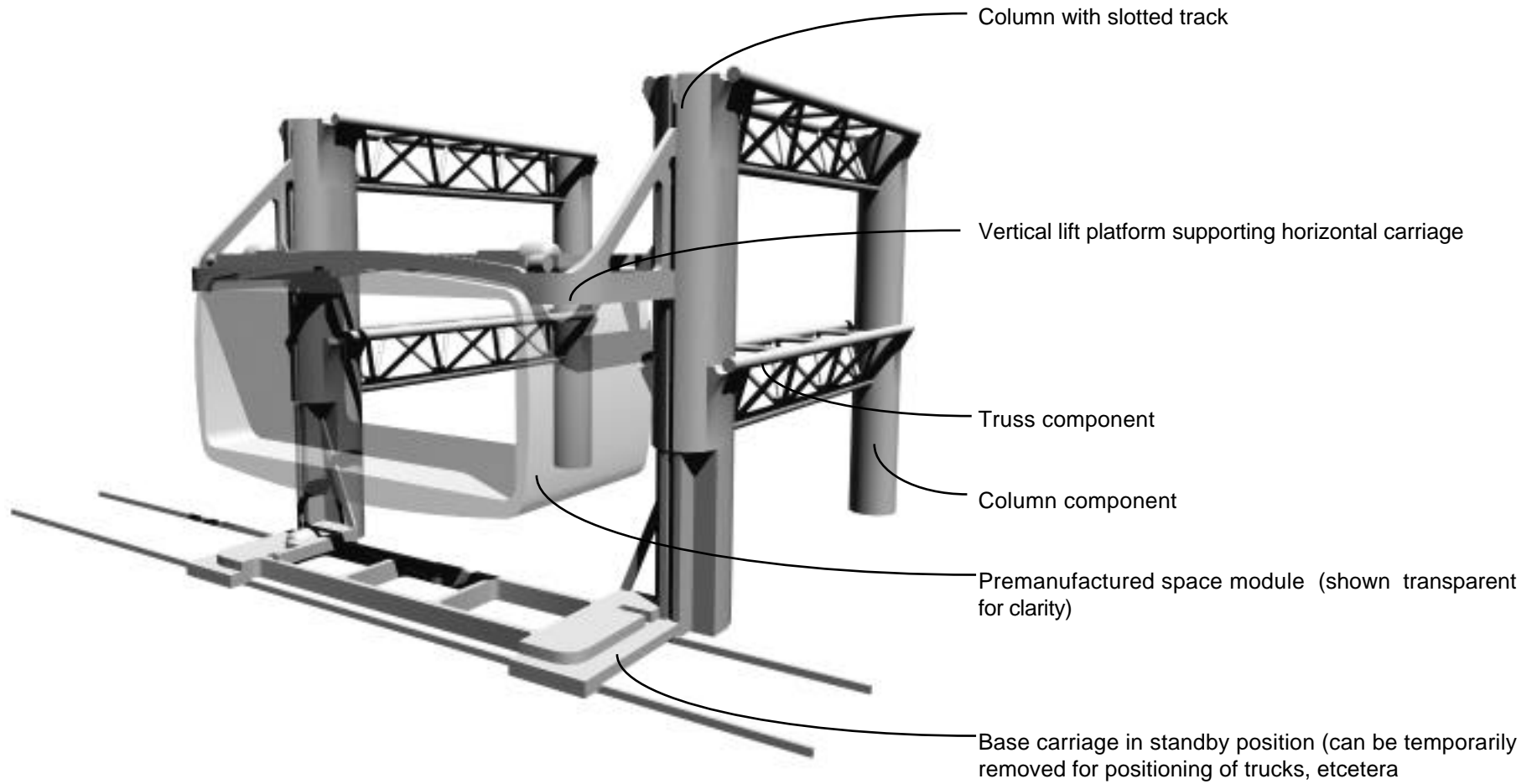
# Winch

**Installation Complete**



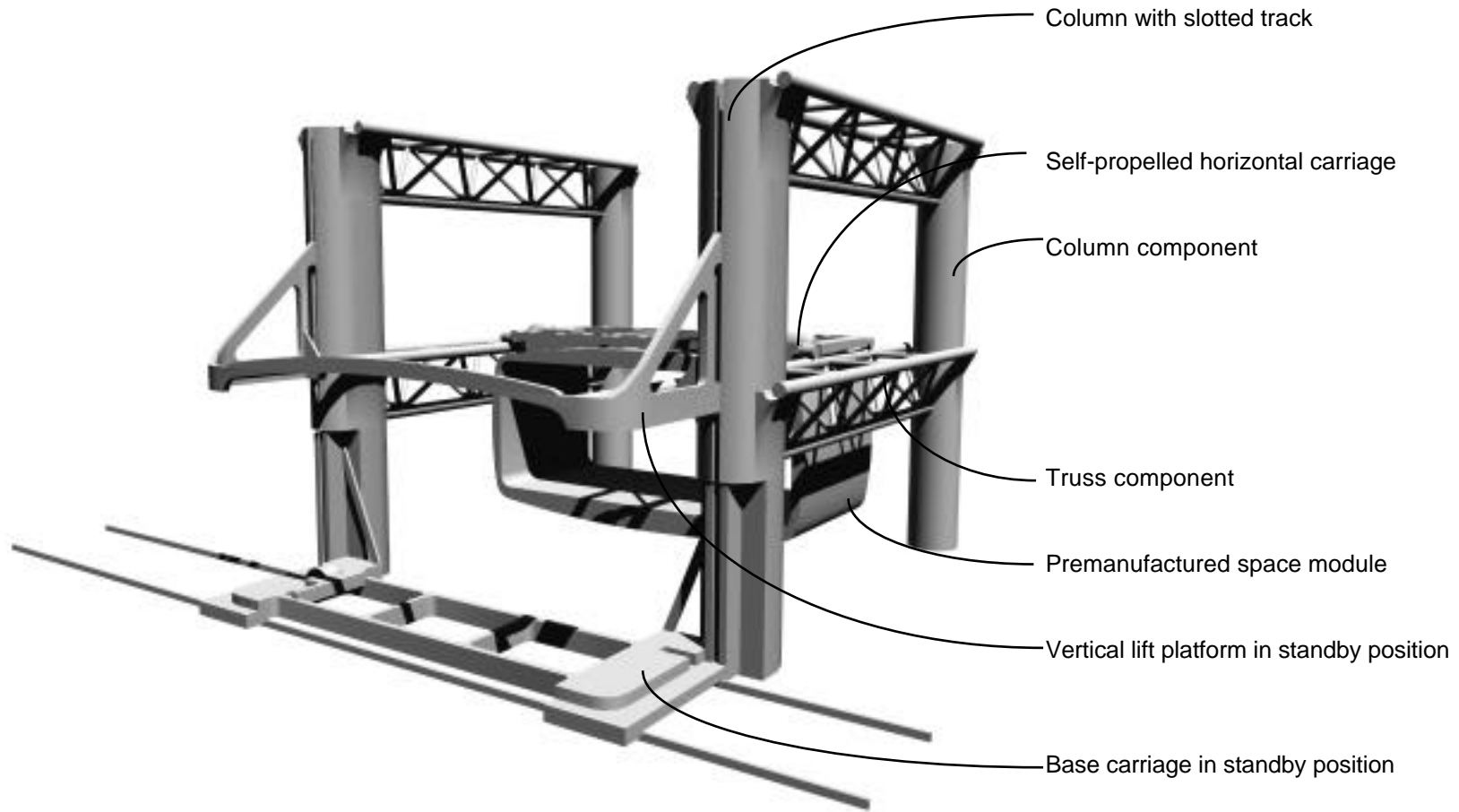
**Winch**

## Vertical Positioning



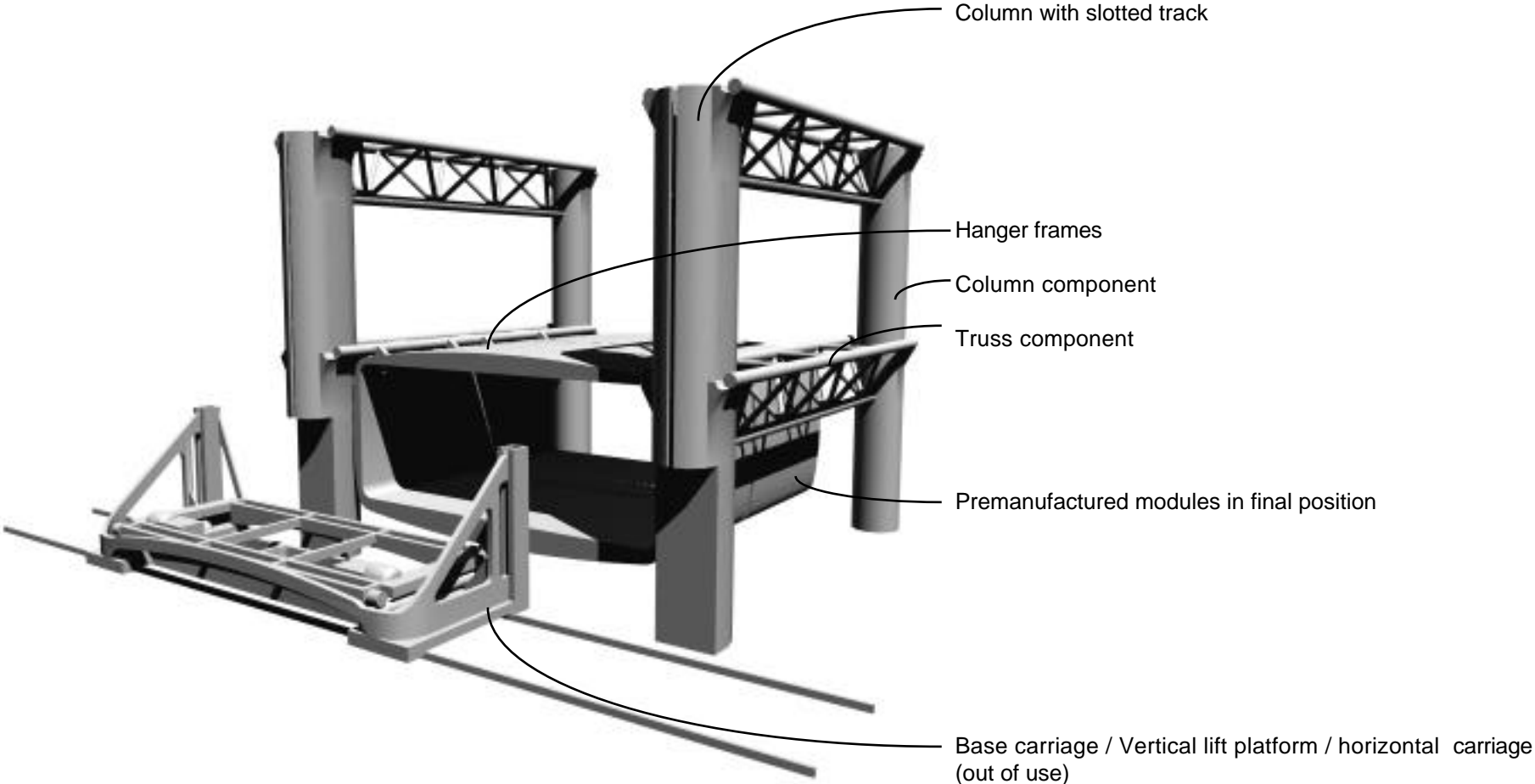
# Platform

## Horizontal Positioning

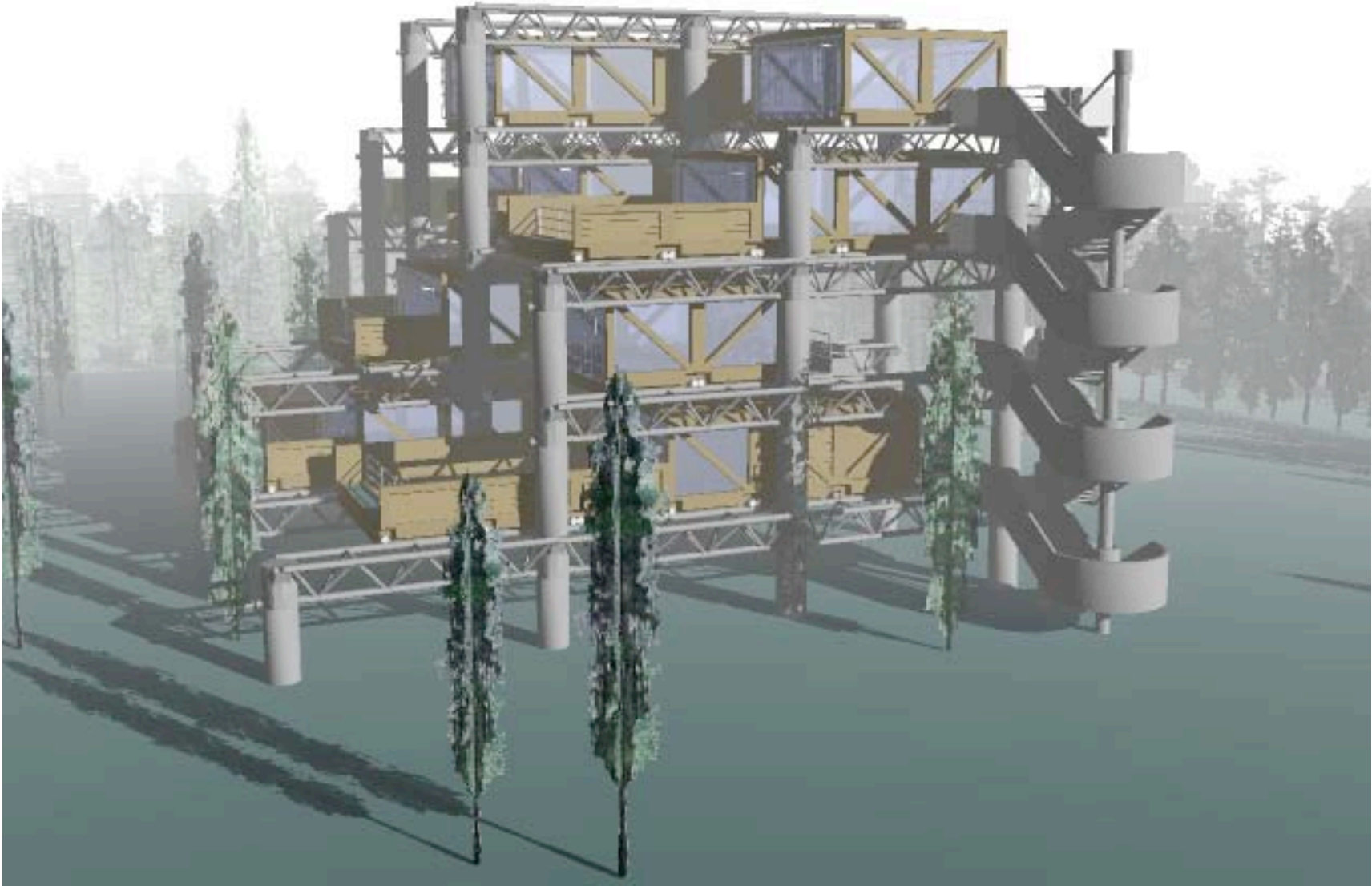


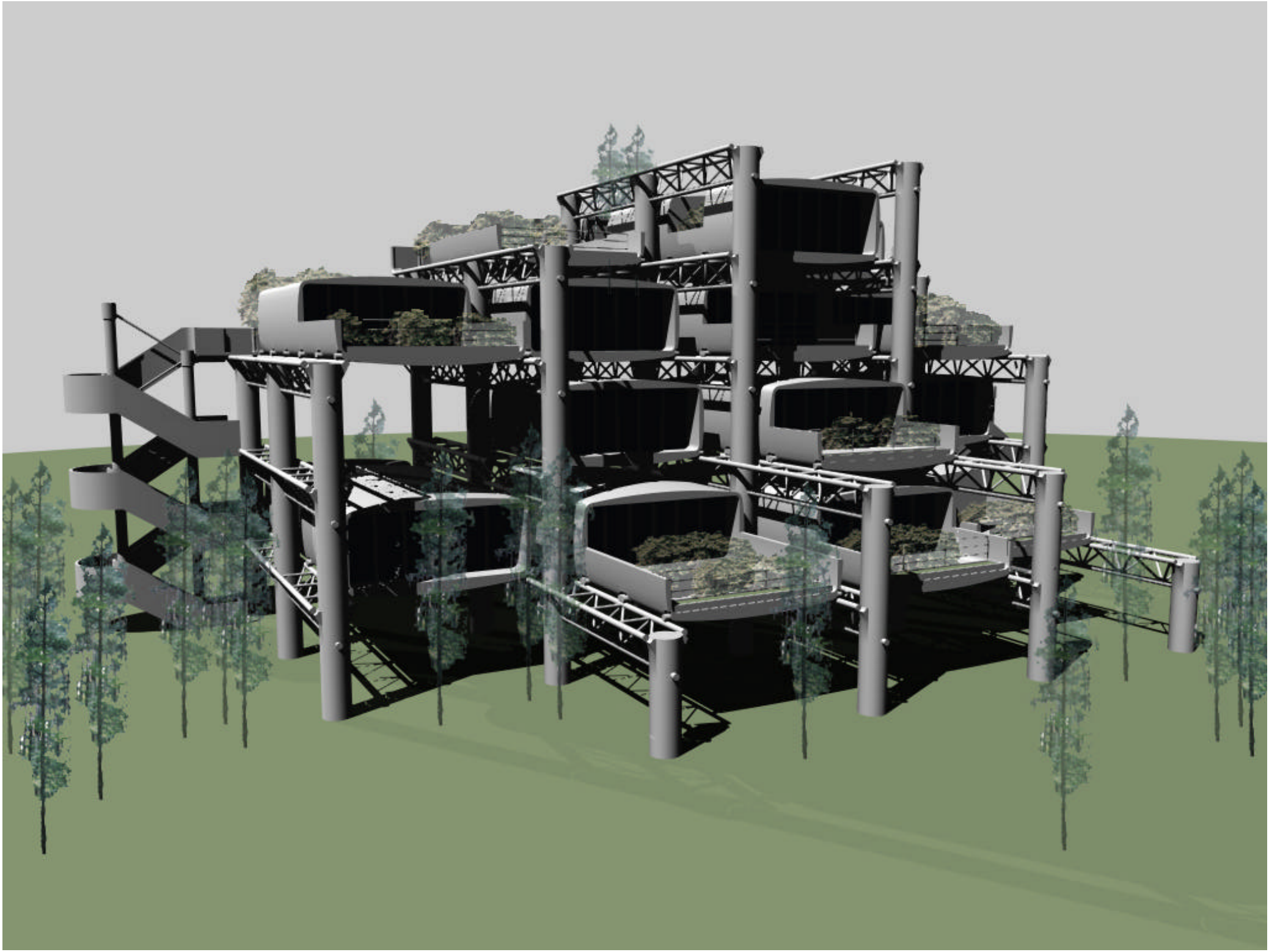
# Platform

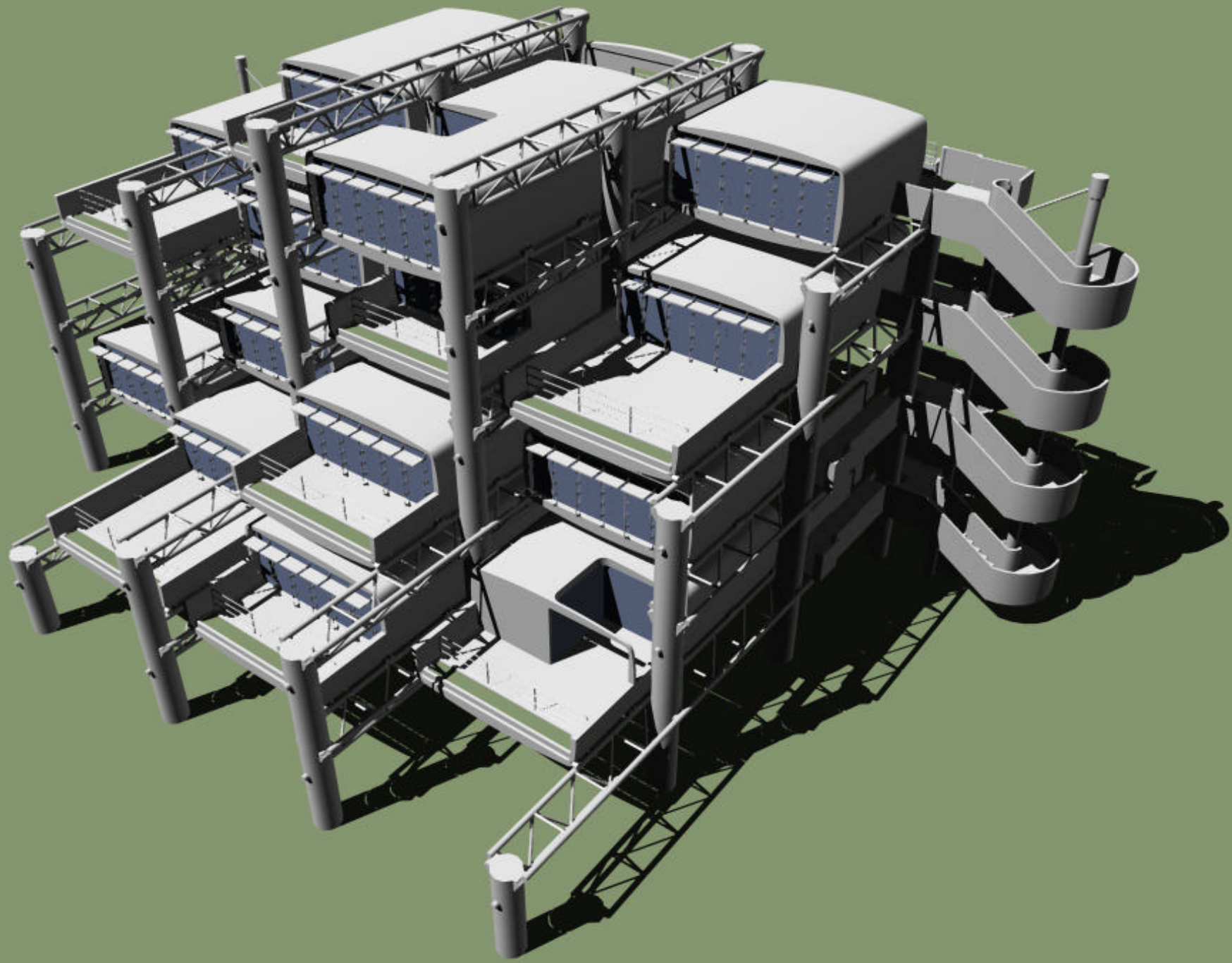
# Installation Complete

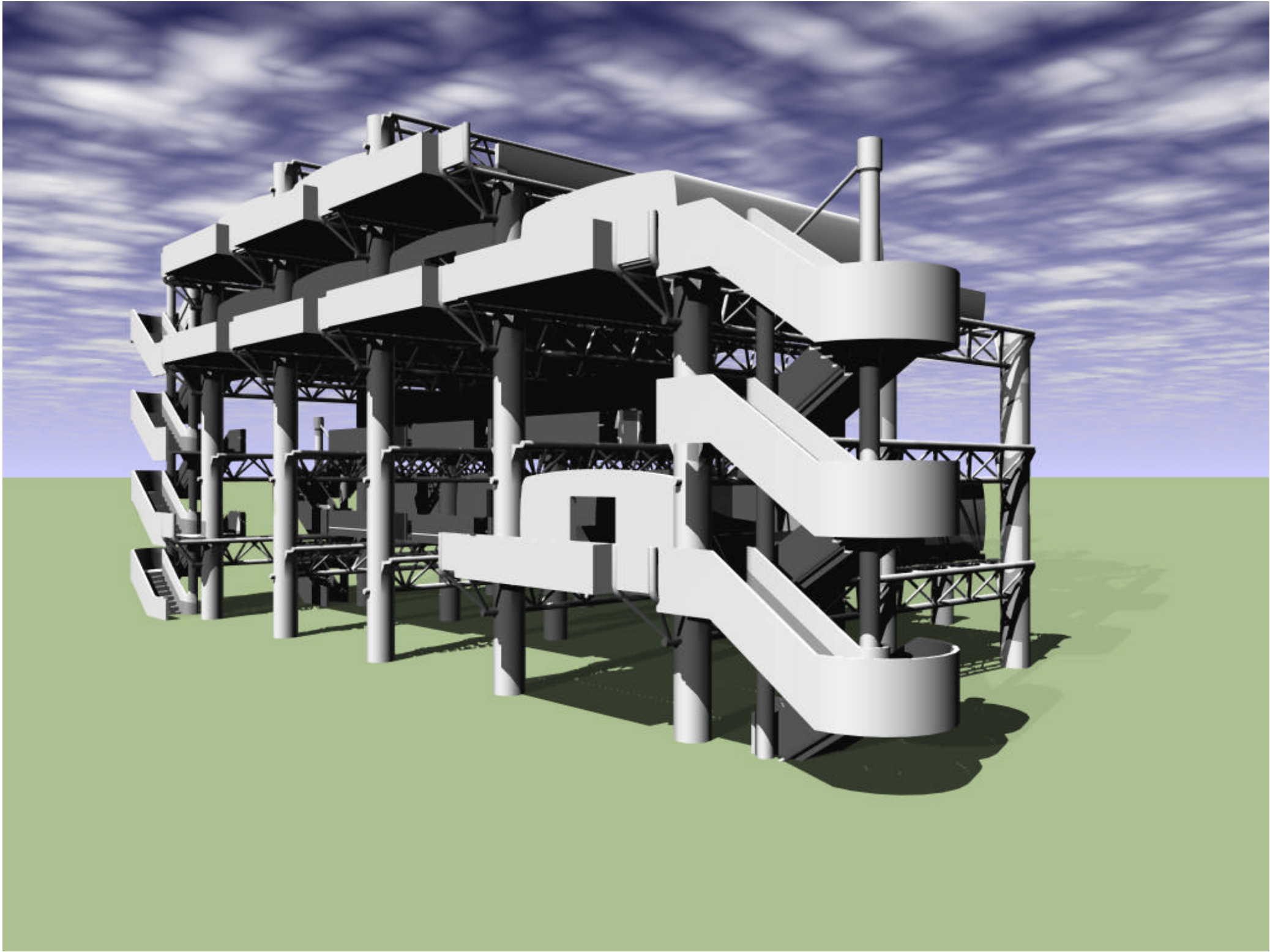


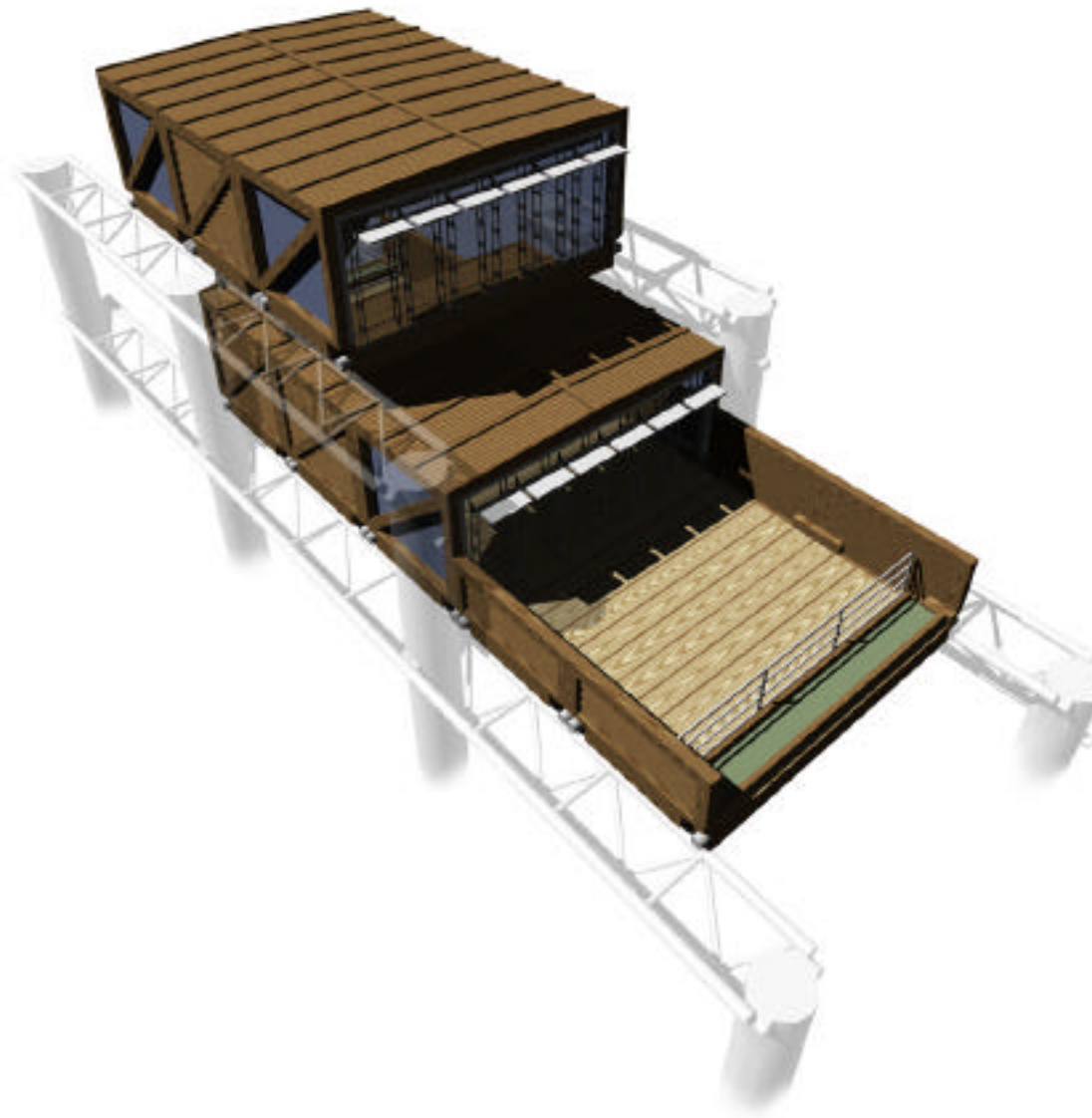
# Platform







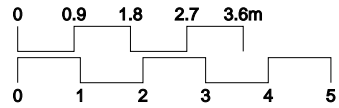
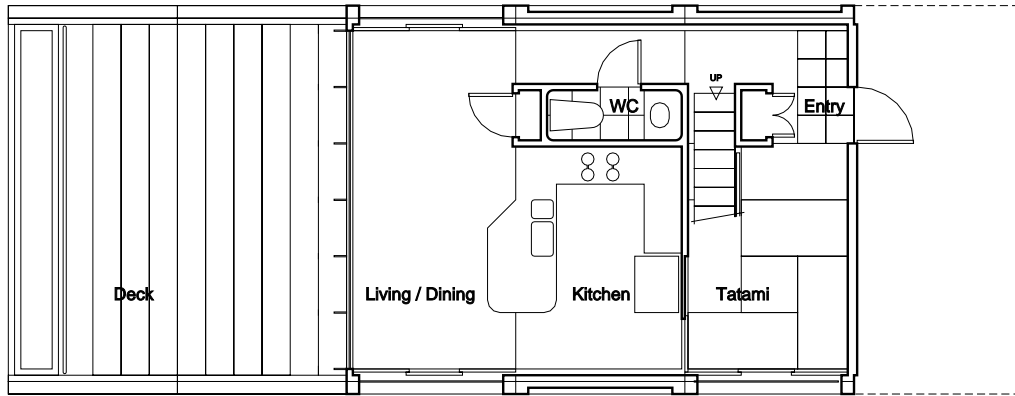




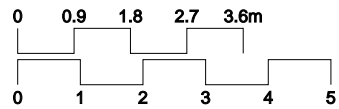
## Example residence

An example residence using wood frame construction. The residence has two deck modules and six space modules. Interior usable space totals 87sq. meters (935sf), and deck space totals 29sq. meters (312sf).

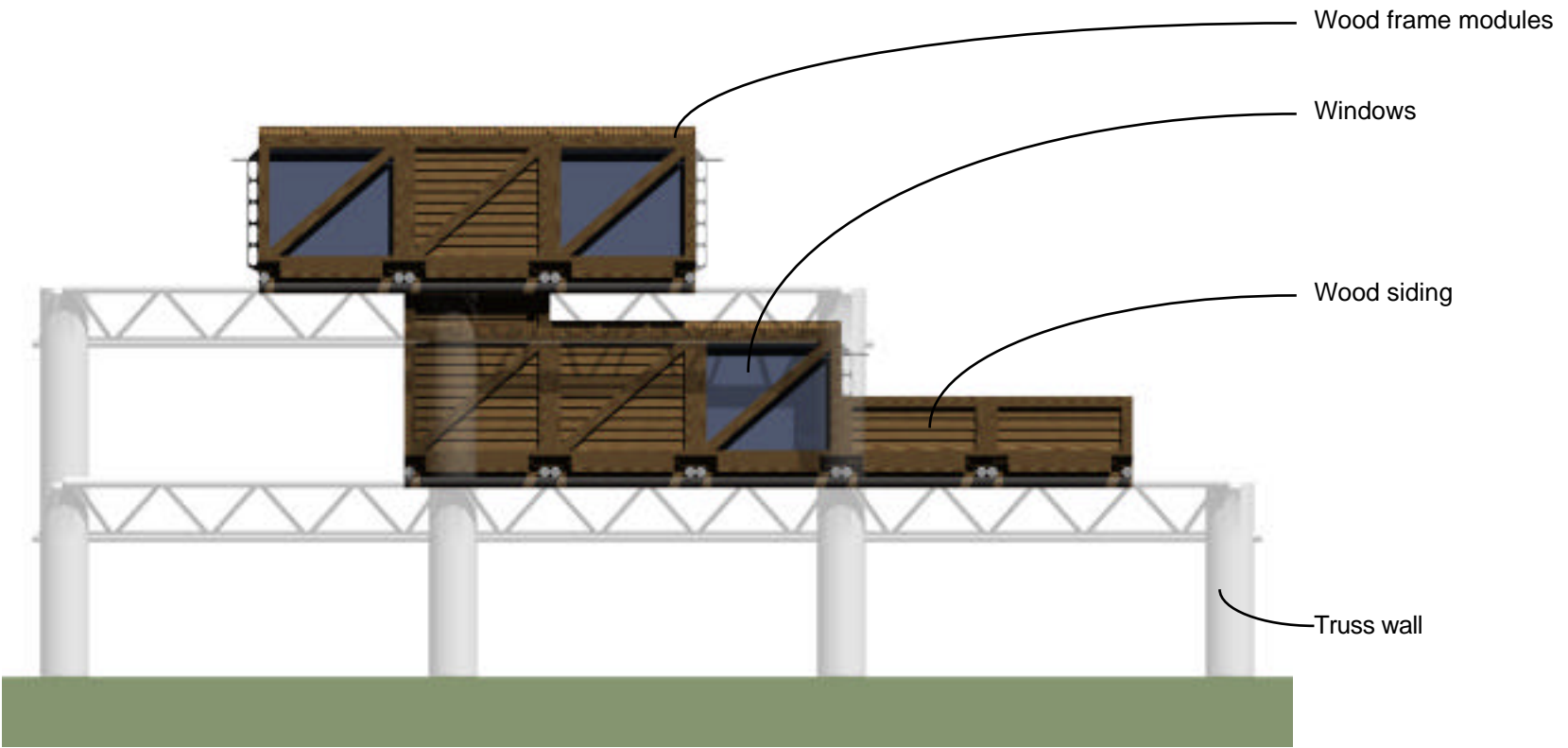
As in a normal detached residence, this example has its main entry and core areas on the bottom floor, with bedrooms located on the top floor. The deck acts as an extension to the living room.

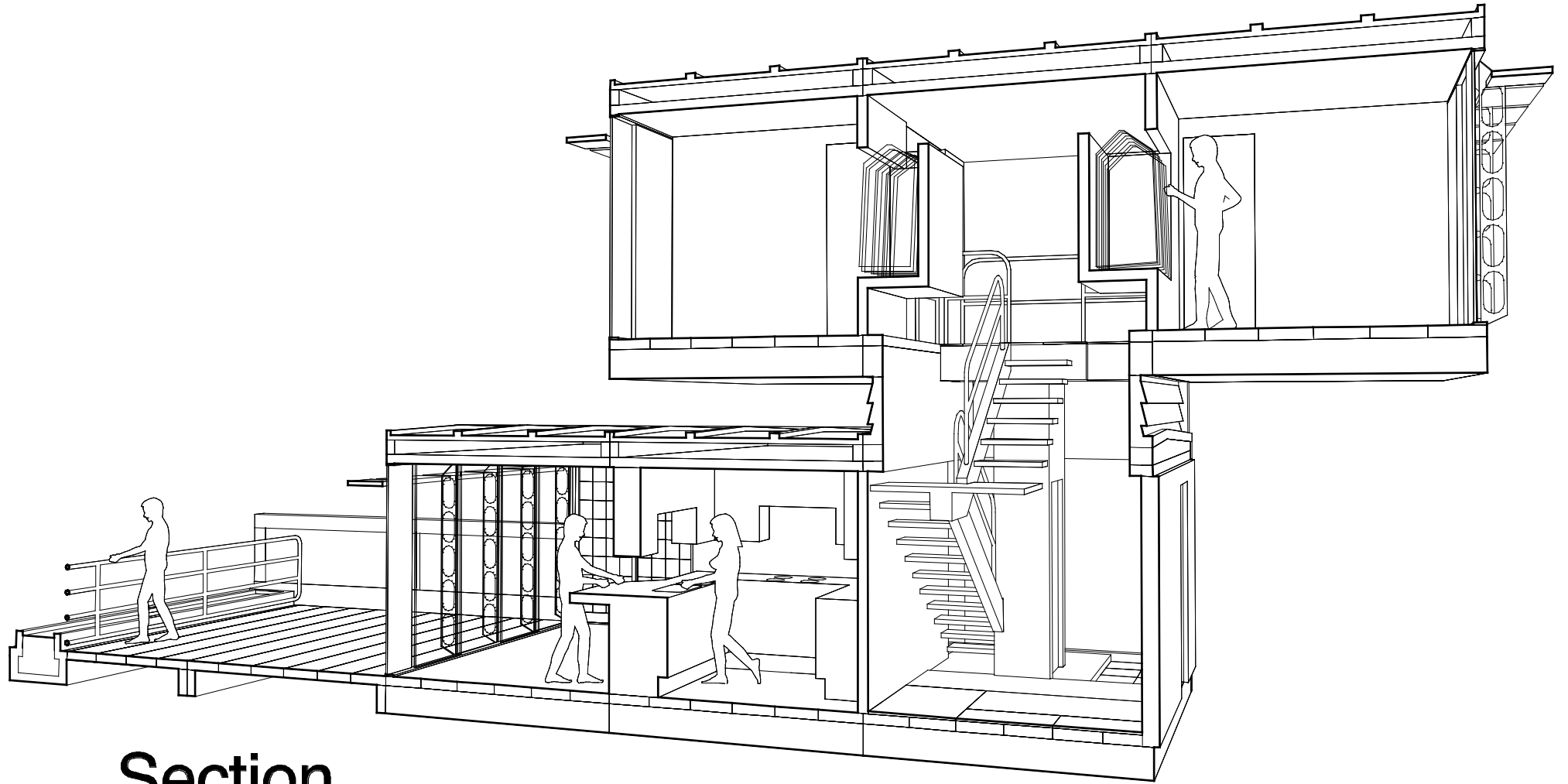


**First Floor Plan**

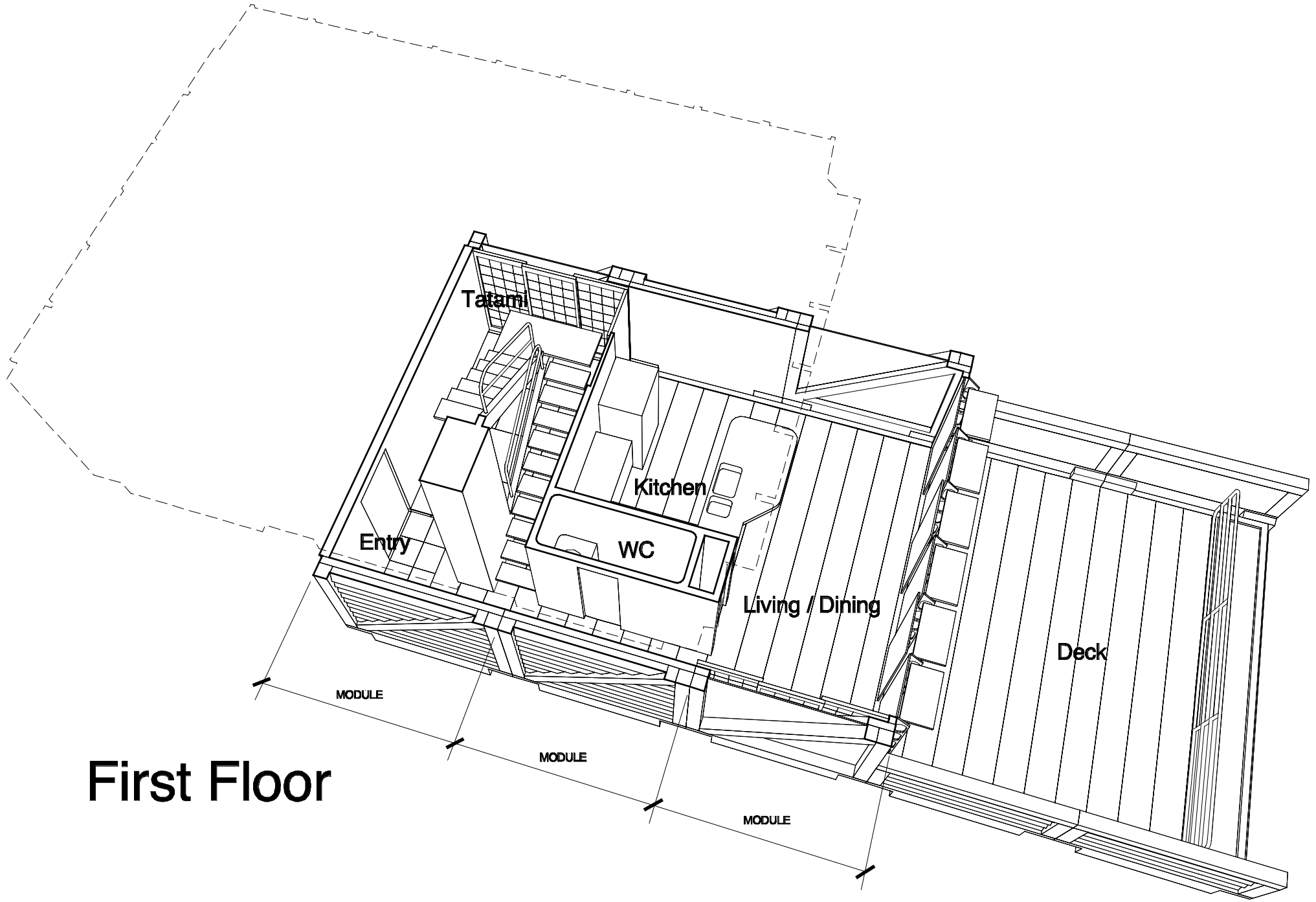


**Second Floor Plan**





**Section**



Tatami

Kitchen

WC

Living / Dining

Deck

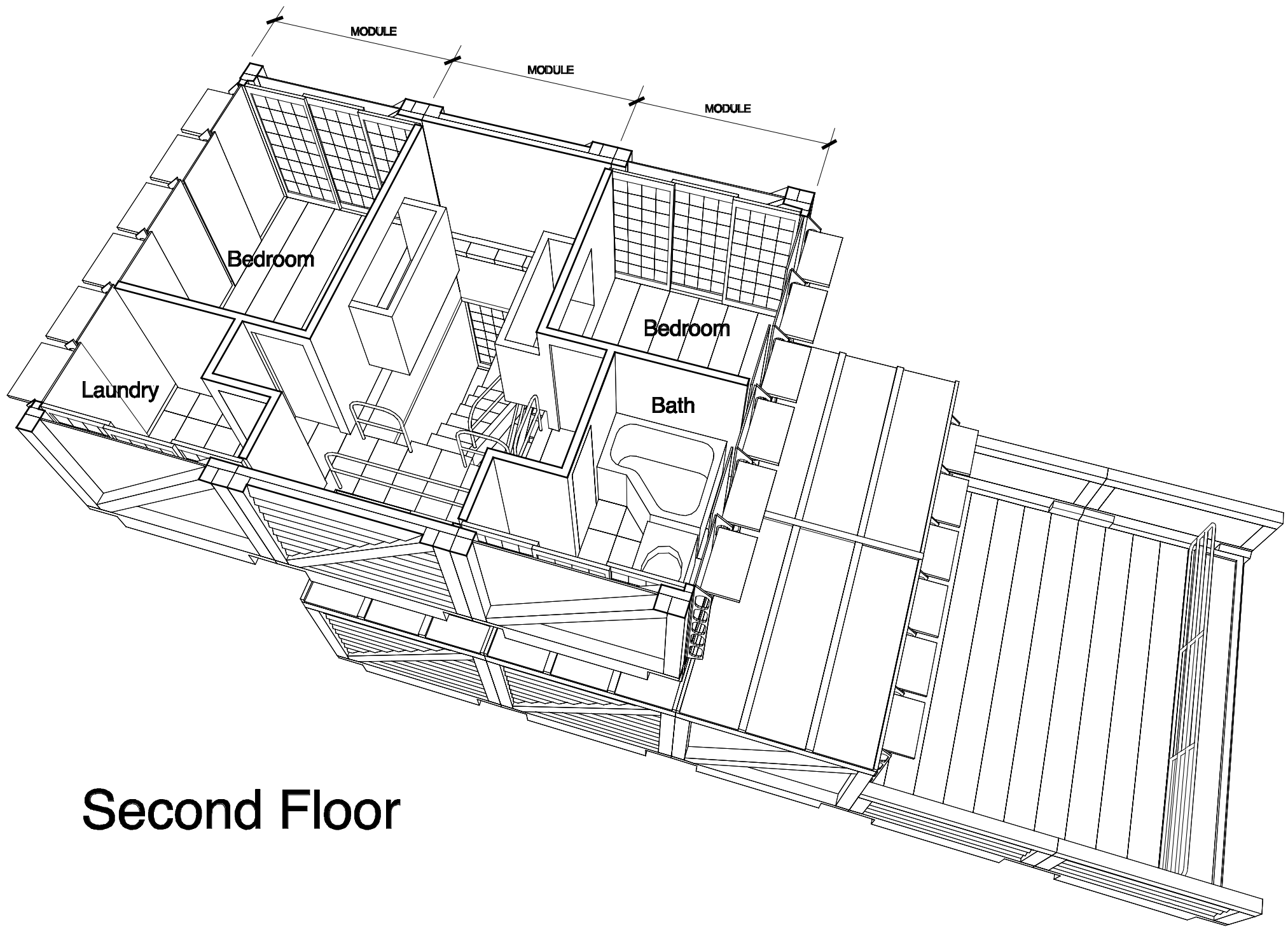
Entry

MODULE

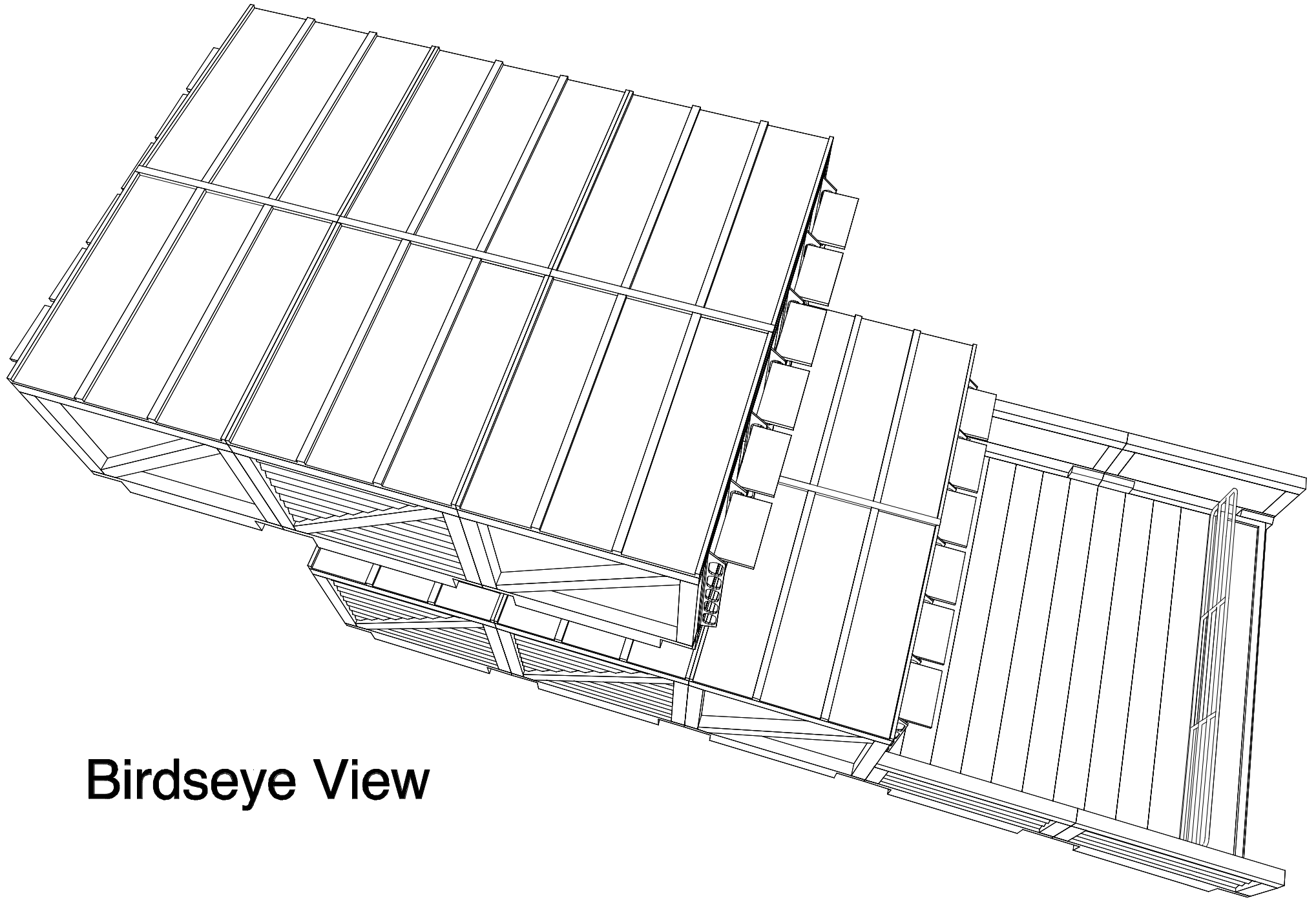
MODULE

MODULE

First Floor



**Second Floor**



**Birdseye View**